

## HOW TO TREAT YOUR WAVE



- Wash the jug at least 1-2 times a week.
- Keep cartridge away from soap unless empty.
- The plastic parts are dishwasher safe.



- Pour while the reservoir is full.
- Put gasket in dishwasher.



### INDICATOR

Want to know when to change your filter?  
Visit [phoxwater.com/app](https://phoxwater.com/app) to get your indicator!

### ACTIVATE YOUR GUARANTEE

Visit [phoxwater.com/activate](https://phoxwater.com/activate) to  
activate your 12 month parts guarantee.



### NEED HELP?

[service@phoxwater.com](mailto:service@phoxwater.com)

### HOW TO REACTIVATE AFTER A PERIOD OF NON-USE:

Soak in water during non-use and  
perform 2 run throughs before  
commencing use.

Household equipment for the treatment of drinking water. The pitcher filters the drinking water from the mains thanks to a cartridge that improves the taste of the water by reducing any unwanted substances that may be present.

Warning: this product requires regular periodic maintenance, including washing the jug and replacing the filter, in order to ensure the potability requirements of the treated drinking water and the maintenance of improvements as declared by the manufacturer.

In the event of a boil water notice or similar emergency, the filtered water should be boiled. Dispose of the used filter media in use when the boil water notice period is over.

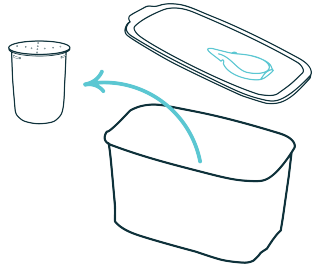
phox

# HOW TO SET UP YOUR WAVE

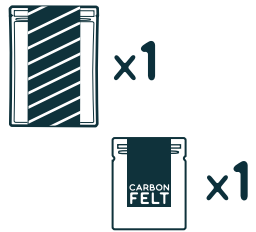




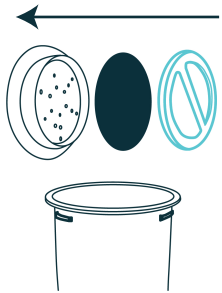
SCAN FOR SET UP VIDEO  
OR VISIT [PHOXWATER.COM/SETUP](https://phoxwater.com/setup)



- 1** Remove reservoir from main body and remove cartridge from reservoir. Wash each component of the jug.



- 2** Take out the filter packet and carbon felt bag from the pack.



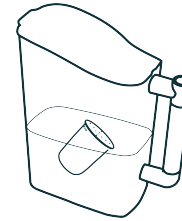
- 3** Take out the carbon felt disk and insert into the lid as shown.



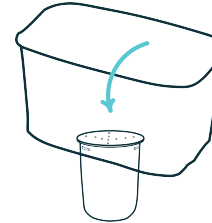
- 4** Open up your filter packet and pour into the cartridge.



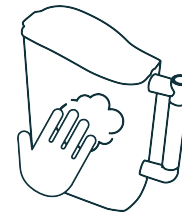
- 5** Fit the lid securely on to the cartridge.



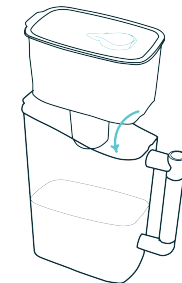
- 6** Half fill the main body with fresh cold water and soak cartridge for 6 minutes.



- 7** Twist the cartridge into the reservoir and fill up. Allow 2 full reservoirs to filter before consuming water.



- 8** Wash out the main body, as it may have deposits from step 7.



- 9** Place the reservoir back into the main body.

**YOU ARE NOW READY TO USE YOUR WAVE!**