

SPECIFICATION

Customer	RH Amar
Product	LoSalt® Original
Product Code	25

Material Specification

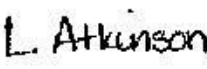
Appearance	White, crystalline powder.
Potassium Chloride	66.2 ± 2% (34.6g Potassium in 100g) Particle Size. Mid-Range (150 – 850 micron) used
Sodium Chloride	33.3 ± 2% (13.3g Sodium in 100g)
Moisture Content	Less than 1.0%
Heavy Metals	<5ppm
Lead	<2ppm
Flowing Agent	<ul style="list-style-type: none"> 0.4 – 0.6% Magnesium Carbonate (PhEur) added Max 14ppm Sodium Hexacyanoferrate (Added to the Sodium Chloride as supplied)

Nutritional Information (per 100g)

Energy	0kJ/0kcal
Fat	0g
~ Of which saturates	0g
Protein	0g
Carbohydrate	0g
~ Of which sugars	0g
Protein	0g
Salt	33g
Vitamins & Minerals	
Potassium	34.6g
Sodium	13.3g

Certification & Suitability

BRC	Certified
Kosher	Certified
Halal	Certified
Vegetarian	Suitable
Vegan	Suitable
Allergens	None present

Approved: 
 Date: Laura Atkinson, Quality, H & S Manager

Date: 24 August 2022
 Rev:5

SPECIFICATION

Packaging 1 x 6 x 350g (360 cases per pallet)

Pack Format	1 x 6 x 350g Composite Tub
Tub Label	LoSalt Original UK 350g <ul style="list-style-type: none"> • Tipografic Ltd/KLI 069A_v2/230522 • Proof attached, see page 4
Top Line Code	Tub Number
Bottom Line Code	Best Before Date (Two Years)
Tub Barcode	5011544070034
Tray Details	6*350g 'Food Garland, stacked logo' <ul style="list-style-type: none"> • Bissett "NEW LoSalt 6x350g SRP tray/215*145*40mm/171121 • Proof attached (see page 6)
Tray Barcode	05014625070046
Gross Weight of Case	2.37kg
Dimensions of Case	144 x 220 x 127mm
Cases Per Pallet	360 (10 layers of 36). <ul style="list-style-type: none"> • Barcode label applied to each case (see page 8)
Pallet Dimensions	Std 1200 x 1000mm
Storage	Cool, dry, ambient

Notes/Comments	
----------------	--

Packaging 1 x 6 x 350g (360 cases per pallet) – FOR AMAZON

Pack Format	1 x 6 x 350g Composite Tub
Tub Label	LoSalt Original UK 350g <ul style="list-style-type: none"> • Tipografic Ltd/KLI 069A_v2/230522 • Proof attached (see page 4)
Top Line Code	Tub Number
Bottom Line Code	Best Before Date (Two Years)
Tub Barcode	5011544070034
Tray Details	6*350g 'Food Garland, stacked logo' <ul style="list-style-type: none"> • Bissett "NEW LoSalt 6x350g SRP tray/215*145*40mm/171121 • Proof attached (see page 6)
Tray Barcode	15011544070031
Gross Weight of Case	2.37kg
Dimensions of Case	144 x 220 x 127mm
Cases Per Pallet	360 (10 layers of 36). <ul style="list-style-type: none"> • Barcode label applied to each case (see page 8)
Pallet Dimensions	Std 1200 x 1000mm
Storage	Cool, dry, ambient

Notes/Comments	
----------------	--

Approved: **L. Atkinson**
 Date: Laura Atkinson, Quality, H & S Manager

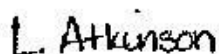
Date: 24 August 2022
 Rev:5

SPECIFICATION

Packaging 1 x 12 x 700g (105 cases per pallet)

Pack Format	1 x 12 x 700g Composite Tub
Tub Label	LoSalt Original UK 700g <ul style="list-style-type: none"> • Tipographic Ltd/KLI 070A_v2/230522 • Proof attached (see page 5)
Top Line Code	Tub Number
Bottom Line Code	Best Before Date (Two Years)
Tub Barcode	5010117070099
Tray Details	12*700g 'The Healthy Alternative' <ul style="list-style-type: none"> • Cullen Packaging "Lo-Salt 12x700g" tray / spec. 45309 (C2) / size: 323*240*40 / date: 31.05.16 • Proof attached (see page 7)
Tray Barcode	05011544070089
Gross Weight of Case	9.32kg
Dimensions of Case	327 x 245 x 182mm
Cases Per Pallet	105 (7 layers of 15) <ul style="list-style-type: none"> • Barcode label applied to each case (see page 9)
Pallet Dimensions	KCI 1200 x 1000mm
Storage	Cool, dry, ambient

Approved:



Date: Laura Atkinson, Quality, H & S Manager

Date: 24 August 2022

Rev:5

SPECIFICATION

350g Label Proof

TIPOGRAPHIC
LABELS AND FLEXIBLES

CUSTOMER: Klinge Chemicals Ltd **DATE:** 23/5/2022

DESCRIPTION: LoSalt UK Original - 350g

COLOURS: **CYAN** **MAGENTA** **YELLOW** **BLACK** **P2746** **CYAN-BG**

OUR REF: KU 069A **CUST REF:**

DIMENSIONS: 123 x 228 mm

VERSION
2

Disclaimers: Please ensure all products are checked for text accuracy, content, size and colours. Proofs approved electronically will be matched to Fogra 39L. All Pantone colours on this proof will be matched to PANTONE Swatch Library. If the PDF is not displaying correctly, adjust your preferences within Acrobat as follows - EDIT > PREFERENCES > PAGE DISPLAY > CHECK OVERPRINT PREVIEW IS ON.



Original
LO SALT

66% LESS SODIUM
than regular table, sea and rock salts

all the same great taste

FOR UK SALE ONLY - NOT FOR EXPORT

LoSalt is a registered trademark of Klinge Foods Ltd.
Produced by Klinge, East Kilbride, Scotland, G75 0DX
For more information & recipes visit www.losalt.com

**SEASON TO TASTE,
SEASON WITH SENSE**

 **Blood Pressure**


5 011544 070034 >

Creating great tasting, healthier food
a great source of potassium

Too much salt (sodium chloride) in the diet can increase the risk of high blood pressure, a major risk factor for heart disease and stroke. With **66% less sodium** than regular table, sea and rock salts, switching to **LoSalt** will help you to maintain normal blood pressure. The perfect blend of two natural mineral salts, **LoSalt** is the **healthier alternative** for seasoning, cooling and baking, without compromising on flavour.

LoSalt - the natural choice for your table and kitchen cupboard.

NUTRITIONAL INFORMATION				
	per 100g	%R ¹ *	per serving (1.3g 1/2 tsp)	%R ¹ *
Energy	0kJ/0kcal	0%	0kJ/0kcal	0%
Fat	0g	0%	0g	0%
of which saturates	0g	0%	0g	0%
Carbohydrate	0g	0%	0g	0%
of which sugars	0g	0%	0g	0%
Protein	0g	0%	0g	0%
Salt	33g	5.50%	0.43g	7%
Potassium	34600mg	1730%	450mg	23%
Sodium	13300mg	n/a	173mg	n/a

*R¹ - Reference intake of an average adult (8400kJ/2000kcal)

SUITABILITY

 **Vegetarians**  **Vegans**  **Not allergy sufferers**

People receiving medication for diabetes, heart or kidney disorders should consult their doctor before using a reduced sodium salt.

INGREDIENTS
Potassium Chloride, Sodium Chloride, Anti-caking agents (Magnesium Carbonate, Sodium Hexafluorophosphate)

SUGGESTED USE
Use **LoSalt** in the same way as you would use regular salt. Please ensure you close the lid & store the container in a cool/dry place. BEST BEFORE - SEE BASE
Enjoy as part of a varied balanced diet & healthy lifestyle.

Reduced sodium salt 350g e 

L. Atkinson

Approved: Laura Atkinson, Quality, H & S Manager

Date: 24 August 2022
Rev:5

SPECIFICATION

700g Label Proof

178mm

252mm



66% LESS SODIUM
than regular table, sea and rock salts

all the same great taste

TIPOGRAPHIC
LABELS AND FLEXIBLES

Traceable
Taste
Quality
Value
Everywhere

☎ +44 (0) 151 647 4999
✉ info@klinge.co.uk
🌐 www.klinge.co.uk

CUSTOMER: Klinge Chemicals Ltd
DESCRIPTION: LoSalt UK Original - 700g
COLOURS: CYAN MAGENTA YELLOW BLACK P1746 CYAN-BG
OUR REF: KL 070A
DIMENSIONS: 178 x 252 mm

DATE: 23/5/2022

CUST REF:

VERSION
2

Reduced sodium salt

FOR UK SALE ONLY - NOT FOR EXPORT
LoSalt is a registered trademark of Klinge Foods Ltd.
Produced by Klinge, East Kilbride, Scotland, G75 0DX
For more information & enquires visit www.losalt.com

**SEASON TO TASTE,
SEASON WITH SENSE**

700g e 



5 010 117 0700991 >

Creating great tasting, healthier food

Too much salt (sodium chloride) in the diet can increase the risk of high blood pressure, a major risk factor for heart disease and stroke.

With **66% less sodium** than regular table, sea and rock salts, switching to **LoSalt** will help you to maintain normal blood pressure. The perfect blend of two natural mineral salts, **LoSalt** is the **healthier alternative** for seasoning, cooking and baking, without compromising on flavour.

LoSalt - the natural choice for your table and kitchen cupboard.

NUTRITIONAL INFORMATION

	per 100g	%RDI*	per serving 1.5g	%RDI*
Energy	0.41kJ/cal	0%	0.41kJ/cal	0%
Fat	0g	0%	0g	0%
Saturated fat	0g	0%	0g	0%
Carbohydrate	0g	0%	0g	0%
Of which sugars	0g	0%	0g	0%
Protein	0g	0%	0g	0%
Salt	3.9g	50%	0.43g	7%
Potassium	34.60mg	17.30%	4.50mg	23%
Sodium	1330mg	na	17.2mg	na

% RDI Reference intake of an average adult (kg 80/2000kcal)

SUITABILITY

INGREDIENTS
Potassium Chloride, Sodium Chloride, Anti-caking agents (Magnesium Oxide, Sodium Hexametaphosphate)

SUGGESTED USE
Use **LoSalt** in the same way as you would use regular salt. Please ensure you dose the salt slowly to ensure it is well mixed in a food, dry place. BSS 1987:06 - SET: BSSC
Enjoy as part of a varied balanced diet and healthy lifestyle.

L. Atkinson

Approved:
Date:

Laura Atkinson, Quality, H & S Manager

Date: 24 August 2022
Rev:5

SPECIFICATION

6 x 350g Tray Proof

BISSETT PRINTERS LABELS AND CARTONS	
Client: Klinge	Date: 17/11/2021
Ref: NEW-1-5041 - 6x350g 287	Doc: 63M
21 Street, 14 Street, 4 Street	
File: Proof	Version: 2
Colors: CMYK: 100% 100% 100% 100% RGB: 255 255 255 PMS: 100 100 100	
Proof approved: _____	Date: _____
Signed: _____ a CAVERN COURT 10000 INDUSTRIAL AVENUE SUITE 1000 TEL: 01709 322000 FAX: 01709 322000 email: sales@bissettprinters.co.uk	

While every care has been taken in the production of this artwork, we accept no liability for any errors or omissions. The printer will not be responsible for any loss of profit or business resulting from the use of the artwork. Please provide any amendments in writing.




Approved:
Date:

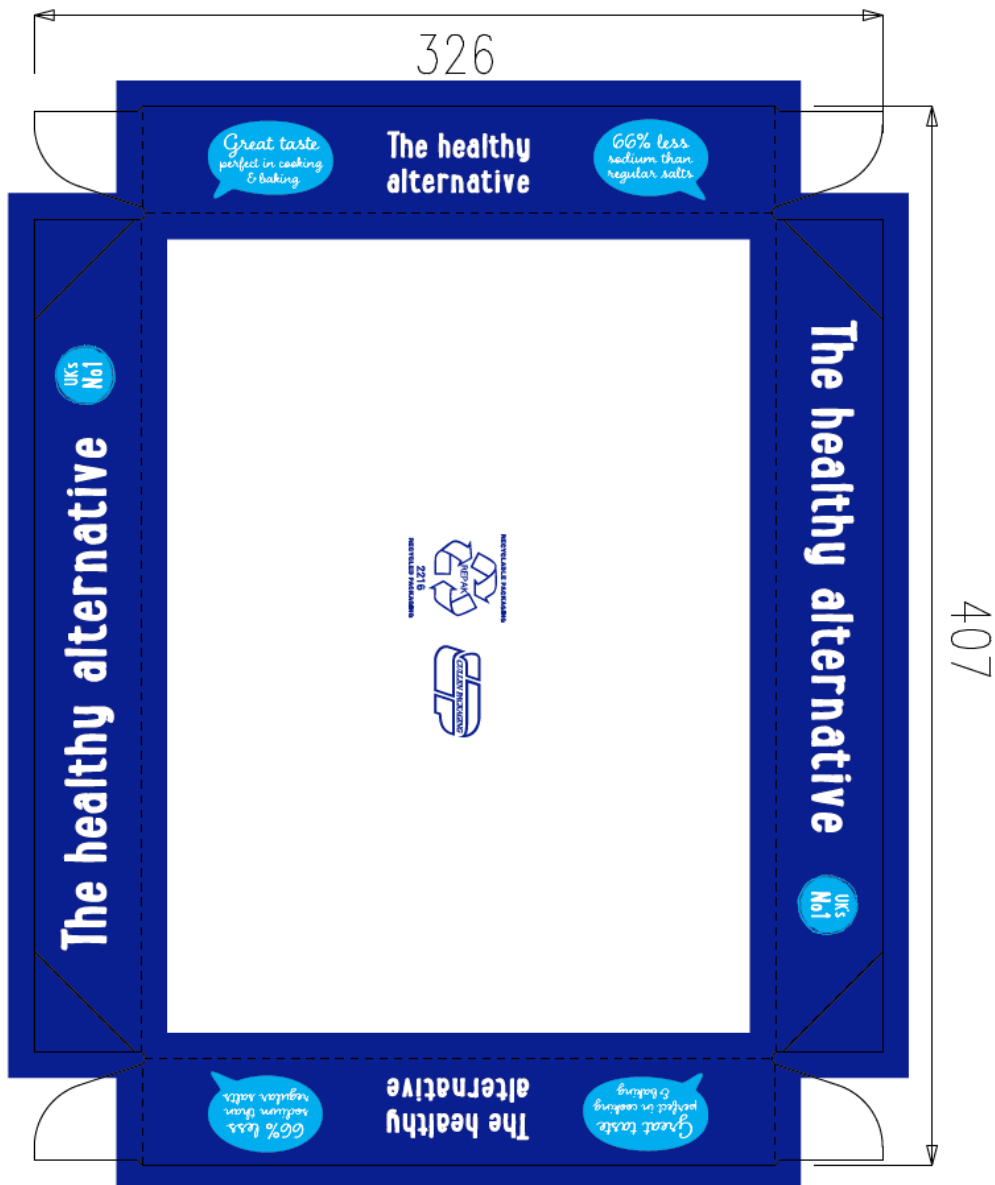
L. Atkinson
Laura Atkinson, Quality, H & S Manager

Date: 24 August 2022
Rev:5

SPECIFICATION

12 x 700g Tray Proof

 <p>GLOBAL - INNOVATIVE - ECO FRIENDLY 10 Dowholm Avenue, Glasgow G20 0TS tel: 0141 945 2222 fax: 0141 945 3567</p>	
<p>customer detail</p> <p>customer: Klinge Chemicals reference: Lo-Soft 12x700g date: 31/5/16</p>	
<p>job detail</p> <p>specification number: 45309 (C2) cutter reference: xxx size: 323x240x40 style: 0304 board: 1251WK 125T'E proof date: 31/5/16 print: flexo</p>	
<p>colour swatches</p> <p>PMS 2746 Cyan PMS 716C</p>	
<p>design confirmation</p> <p>created by: Tony Traynor proof no: 3</p> <p>This artwork is a computer generated file from our graphics studio. Flexo printed cartons will not be as clearly defined as shown on here, especially on fine white sections, reversed out of a solid colour. Tints/percentage colours will be screened at 65lpi max, therefore dots used will be obvious at this level. Print movement tolerance is +/- 3mm.</p>	
<p>copyright</p> <p>The artwork provided is protected by strict copyright conditions and remains the property of Robert Cullen Ltd. Whilst every effort has been made to ensure the file is correct, it remains the responsibility of the customer to check all detail before approval. Robert Cullen Ltd will not be held responsible for any new found errors after this approval.</p>	
<p>approval</p> <p>name: _____ date: _____ signature: _____</p>	



L. Atkinson

Approved: _____
Date: Laura Atkinson, Quality, H & S Manager

Date: 24 August 2022
Rev:5

SPECIFICATION

6 x 350g Barcode Case Label (Example)

LoSalt

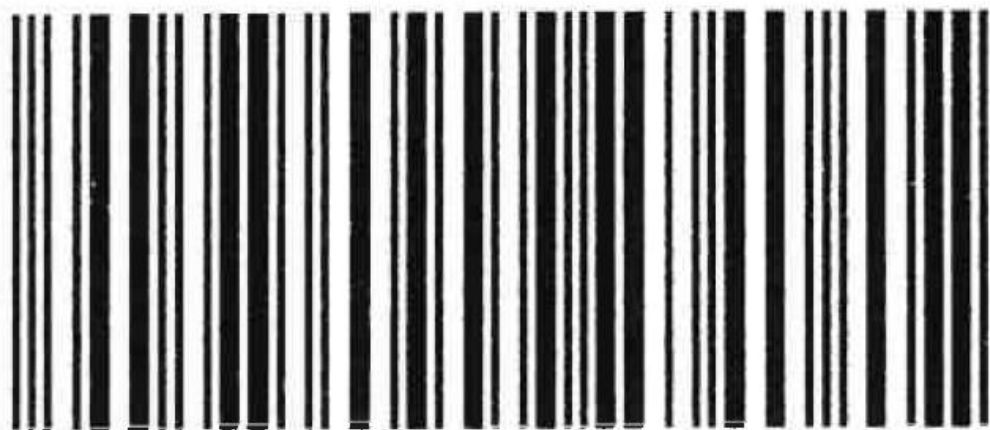
Klinge Chemicals Ltd, 1 Bessemer
Drive, Kelvin Industrial Estate, East
Kilbride, G75 0QX, Scotland, UK

6x350g

07002

BB: 12.07.2024

Pallet No: 470



< 050 14625 07004 6 >

6 x 350g Barcode Case Label – FOR AMAZON (Example)

LoSalt

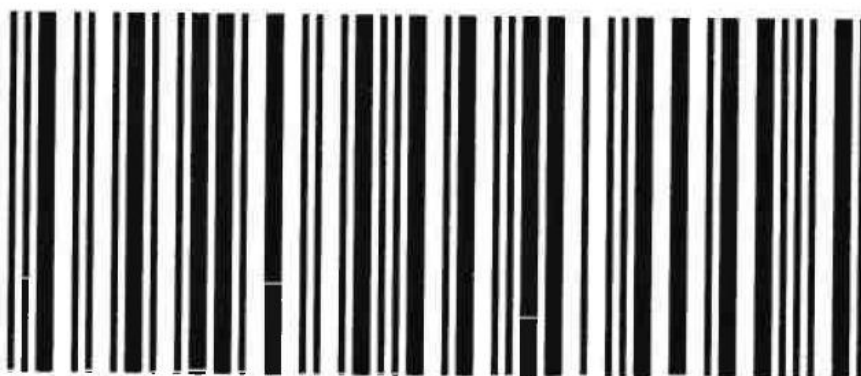
Klinge Chemicals Ltd, 1 Bessemer
Drive, Kelvin Industrial Estate, East
Kilbride, G75 0QX, Scotland, UK

6x350g

07002

BB: 18.02.2024

Pallet No: 001



< 150 11544 07003 1 >

Approved:
Date:

L. Atkinson
Laura Atkinson, Quality, H & S Manager

Date: 24 August 2022
Rev:5

SPECIFICATION

12 x 700g Barcode Case Label (Example)

LoSalt

Klinge Chemicals Ltd, 1 Bessemer Drive,
Kelvin Industrial Estate, East Kilbride,
G75 0QX, Scotland, UK

12x700g
07008

BB: 09.03.2024

Pallet No: 152



< 050 11544 07008 9 >

Approved:
Date:

L. Atkinson
Laura Atkinson, Quality, H & S Manager

Date: 24 August 2022
Rev:5

SPECIFICATION

Revision History

16 November 2021. Revision 1. Spec created.

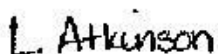
18 November 2021. Revision 2. Tray artwork updated. Example case barcode label added. Sodium Hexacyanoferrate content of sodium chloride added.

22 November 2021. Revision 3. Gross weight of pallet removed.

18 February 2022. Revision 4. 350g case details specific to Amazon added, including barcode label example. 700g pack format added, including label and trays proofs and barcode label example.

24 August 2022. Revision 5. 350g and 700g references and labels updated. Outer case barcode labels updated to new versions showing Company address.

Approved:



Date: Laura Atkinson, Quality, H & S Manager

Date: 24 August 2022

Rev:5