

1-1/2 po

5-3/8 po



1-3/4 po

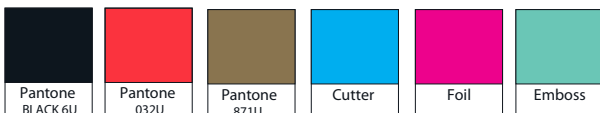
#### important notices

artwork supplied is not fully repro ready / this file should not be used for exact colour matching, please refer to colour references for accurate colour matching / all care has been taken to ensure the accuracy of the artwork provided. It is the client's responsibility to proof read and check the artwork to ensure the design adheres to all legal requirements prior to releasing artwork to preproduction or printers / it is the printers responsibility to ensure barcodes are printed correctly / it is the clients responsibility to purchase the necessary font licences for any fonts used.

Whilst every effort is made to ensure the file is correct, it remains the responsibility of the client to check all details before approval. The Space Creative will not be held responsible for any newfound errors after artwork approval.

It is the client's responsibility to download and save the artwork files supplied by The Space Creative. Once released, we move the files to our creative archive. There will be a charge for un-archiving and re-issuing artwork.

Please use the below Pantone colours for colour reference.



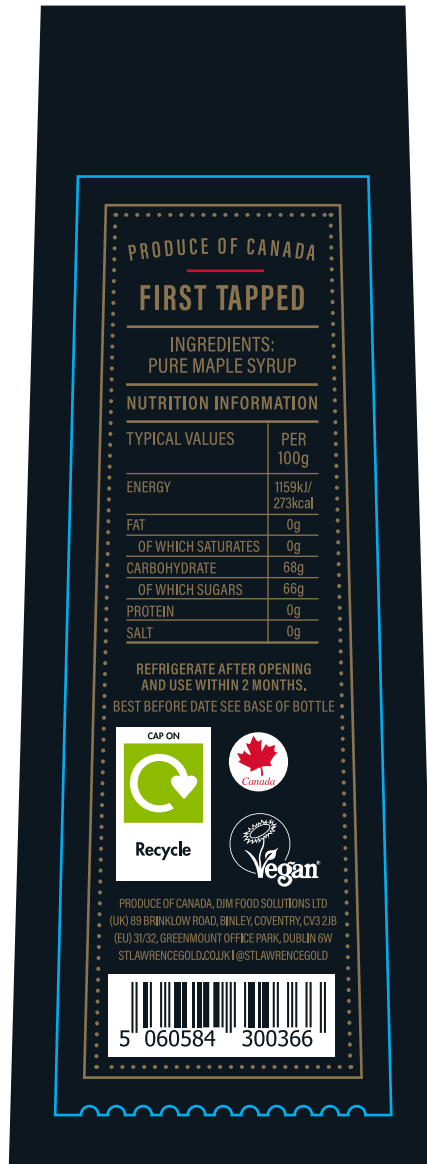
**File Name:**  
1120\_First Tapped

**Fonts Used:** Acumin Pro

**the  
space  
creative®**

1-1/2 po

5-3/8 po



1-3/4 po

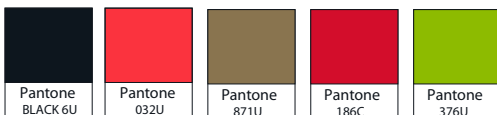
#### important notices

artwork supplied is not fully repro ready / this file should not be used for exact colour matching, please refer to colour references for accurate colour matching / all care has been taken to ensure the accuracy of the artwork provided. It is the client's responsibility to proof read and check the artwork to ensure the design adheres to all legal requirements prior to releasing artwork to preproduction or printers / it is the printers responsibility to ensure barcodes are printed correctly / it is the clients responsibility to purchase the necessary font licences for any fonts used.

Whilst every effort is made to ensure the file is correct, it remains the responsibility of the client to check all details before approval. The Space Creative will not be held responsible for any newfound errors after artwork approval.

It is the client's responsibility to download and save the artwork files supplied by The Space Creative. Once released, we move the files to our creative archive. There will be a charge for un-archiving and re-issuing artwork.

Please use the below Pantone colours for colour reference.



**File Name:**  
1120\_First Tapped

**Fonts Used:** Acumin Pro

**the  
space  
creative**®