



# Cirrus

An MPS Company

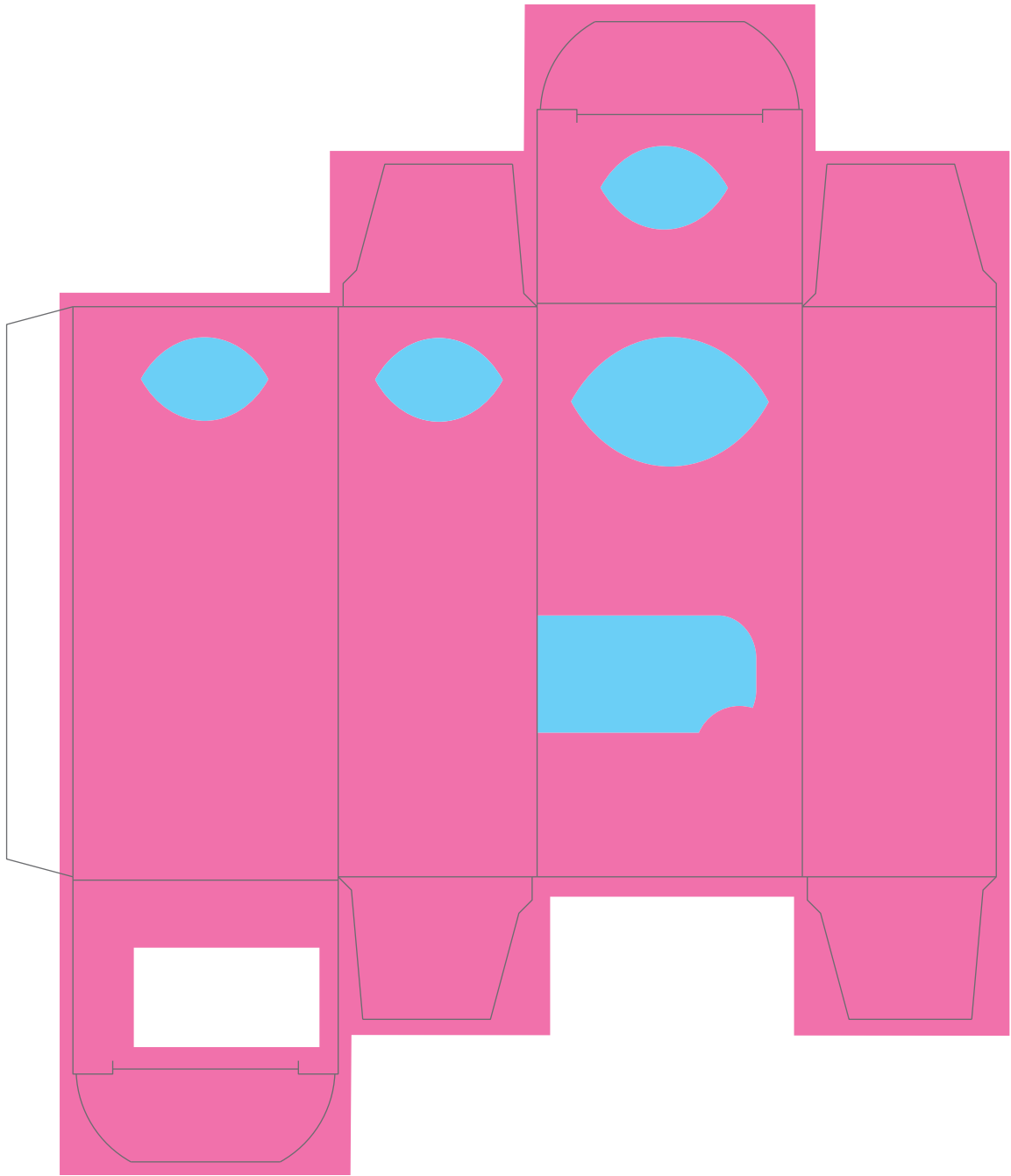
Approval  
Signature

Date

**Warning!** We cannot accept responsibility for any errors in this proof after approval. Whilst we take extreme care at all times to ensure accuracy to our client's brief, the final responsibility must be taken by our client.

**IF YOU SIGN THIS PROOF YOU ARE SIGNIFYING FULL APPROVAL OF DESIGN AND TEXT.**

Customer	East Midlands Pharma	Colours Used
Item Code	PEMP319	Black
Description	Vizulize Dry Eyes Eye Drops 10ml (EU REP)	PANTONE 3425 C
Keyline Reference	EMP44	PANTONE 354 C
Varnish Reference	Drip off Primer Varnish	PANTONE 376 C
Dimensions	40 x 30 x 86mm	PANTONE 226 C
Language	English	PANTONE 877 C
Market	UK	Varnish Free (Non-Printing)
Proof By	SRE	Keyline (Non-Printing)
Proof No.	3	Cirrus_Info_Box
Date	03/12/2020	



An MPS Company

Customer	East Midlands Pharma		Colours Used
Item Code	PEMP319	■	Keyline (Non-Printing)
Description	Vizulize Dry Eyes Eye Drops 10ml (EU REP)	■	Varnish 1
Keyline Reference	EMP44	■	UV Varnish
Varnish Reference	Drip off Primer Varnish	■	Cirrus_Info_Box
Dimensions	40 x 30 x 86mm		
Language	English		
Market	UK		
Proof By	SRE		
Proof No.	3		
Date	03/12/2020		

Approval  
Signature

Date

**Warning!** We cannot accept responsibility for any errors in this proof after approval. Whilst we take extreme care at all times to ensure accuracy to our client's brief, the final responsibility must be taken by our client.  
**IF YOU SIGN THIS PROOF YOU ARE SIGNIFYING FULL APPROVAL OF DESIGN AND TEXT.**