



Finished Goods Specification

Sections

1. Finished Goods Overview
2. Labelling
3. Nutritional Information
4. Pallet Plan
5. GS1 Barcodes
6. Suitability
7. Logos
8. Process Information
9. Packaging Image
10. Revision History
11. Approvals

1. Finished Goods Overview

Item Number	80480
Brand	Dorset
Product Type	Breakfast Cereals
Category	Granola
Variant	Choc & Cherry
Pack Weight (g)	450 g e
Carton Code	YQ01LB01
Packaging Description	Packed into printed film and then into printed, coded cartons and then into cardboard shelf ready outer cases, 5 units per case

2. Labelling

Legal Descriptor	Gently baked oats & golden syrup with dark chocolate, freeze dried cherries, nuts and cocoa powder.
On Pack Ingredient Declaration Including Allergens	<p>Ingredients Wholegrain Oat Flakes (56%),Golden Syrup (Partially Inverted Sugar Syrup),Barley Flakes, Vegetable Oil (rapeseed and sunflower in varying proportions) (JUST USE RAPESEED OIL FOR RYVITA),Dark Chocolate Curls (4.5%)(Cocoa Solids: 70% Minimum(Cocoa Mass, Sugar, Cocoa Butter, Emulsifier (Soya Lecithin),Natural Flavouring)),Freeze Dried Sliced Cherries (3.0%),Macadamia Nuts (2.5%),Cocoa Powder (2.0%),Sunflower Seeds.</p> <p>Allergy Advice: For allergens, including cereals containing gluten, see ingredients in Bold.</p> <p>May Also Contain: Milk, Other Cereals Containing Gluten, Other Nuts.</p>
The percentages/g per 100g statements within/following the ingredients list are calculated based on UK/EU QUID regulations - this uses quantities used in manufacture and can total more than 100% due to water loss. For your reference there is 52% total wholegrain in this finished product. For further ingredient breakdown, contact the Central Technical Dept.	
Storage Information	Once opened, roll the inner bag down tightly, then store in a cool, dry place.
Shelf Life (days)	320
Best Before Date Format	dd mm yyyy
Traceability Coding	Line, Julian, Time e.g. (LA 5212 10:15)

The allergens listed above are based on the 14 EU allergens. If products are being sold internationally, please contact us for further allergen information.

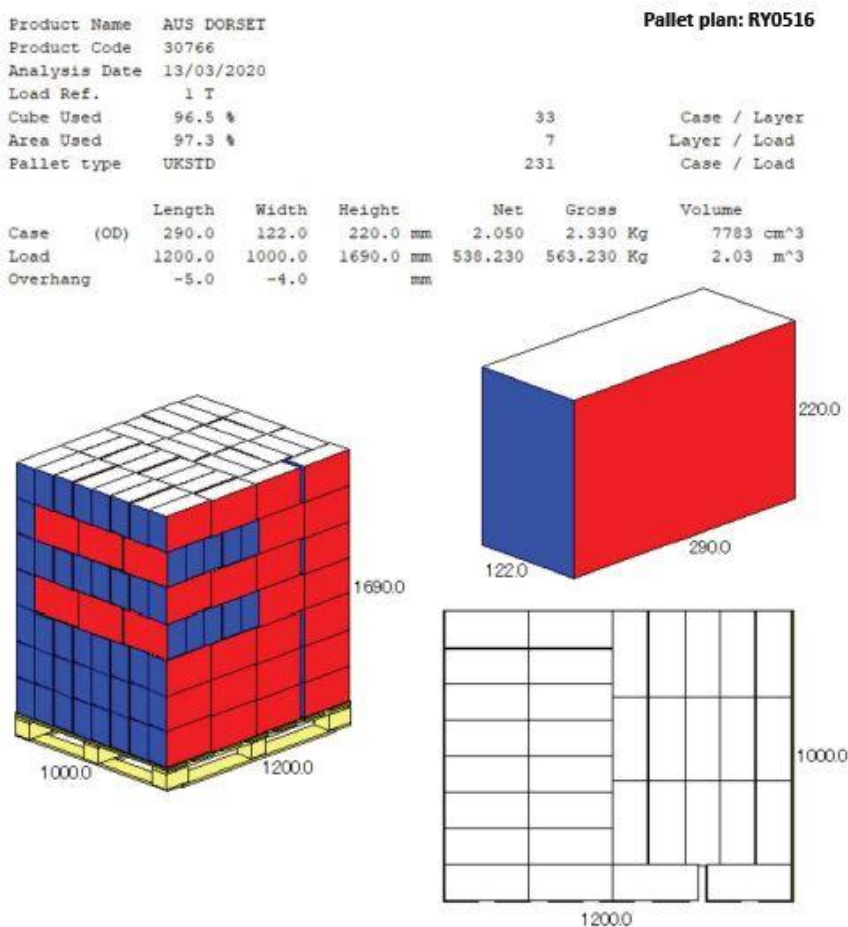
3. Nutritional Information

Nutrient	Per 100g	Per Portion	% RI* Per Portion
Energy kJ	1852 kJ	835 kJ	10 %
Energy kcal	441 kcal	199 kcal	
Fat	14.8 g	6.7 g	10 %

Saturates	2.8 g	1.3 g	6 %
Carbohydrate	64.0 g	28.8 g	11 %
Sugar	13.5 g	6.1 g	7 %
Fibre	6.2 g	2.8 g	
Protein	9.8 g	4.4 g	9 %
Salt	0.03 g	0.01 g	<1 %
*Reference Intake of an average adult (8400kJ / 2000kcal)			
Serving size	45 g		
Servings per pack	Approximately 10 portions per pack		

4. Pallet Plan

The weights in the below pallet plan are generic weights for this particular pallet plan and should only be used for guidance only.



5. GS1 Barcodes

Consumer Unit		Traded Unit	
Barcode Number	5018357804801	Barcode Number	15018357804815

6. Suitability

This product does not contain genetically modified organisms (GMO)
Suitable for vegetarians

7. Logos

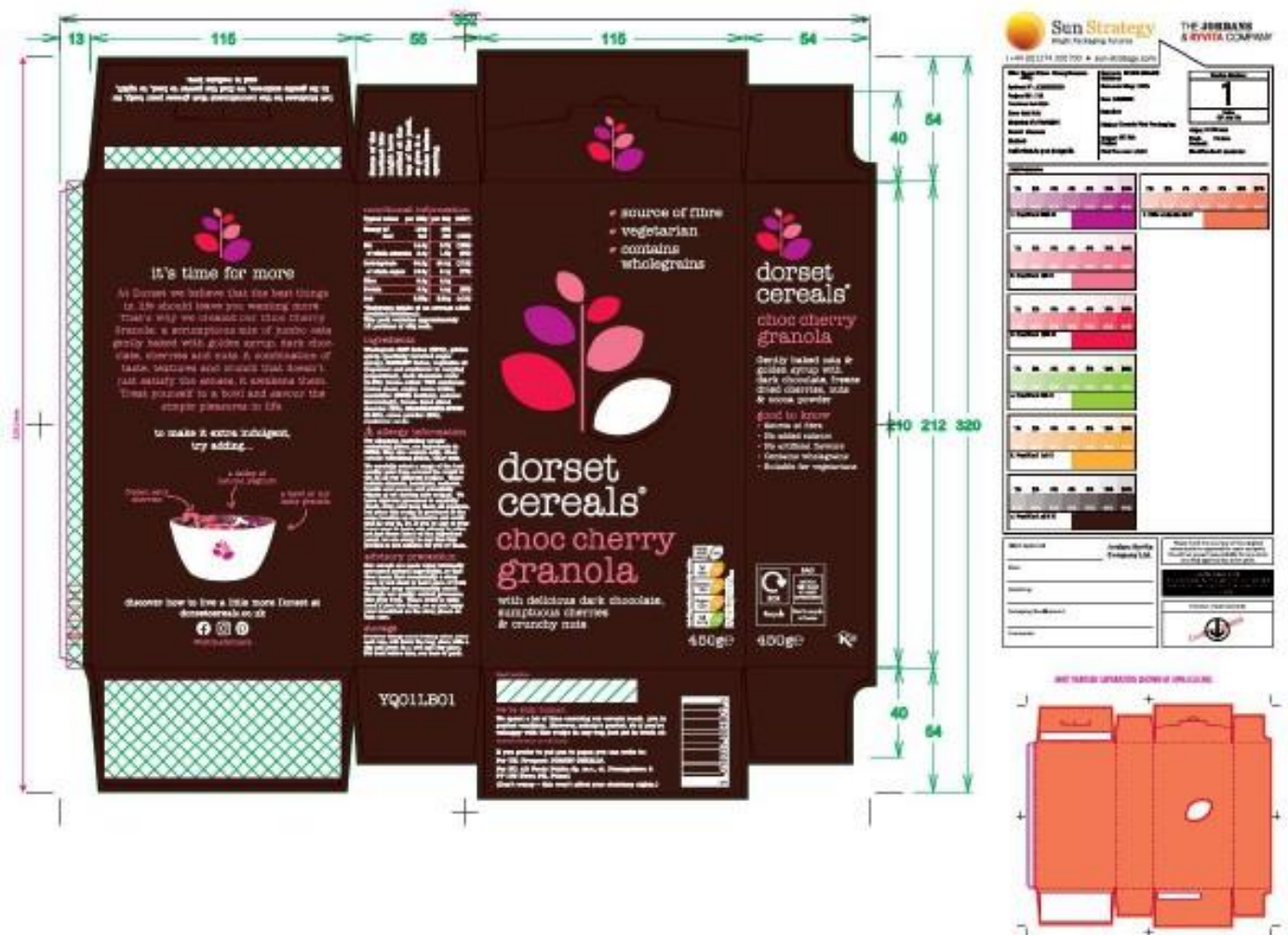
Kosher Dairy (KLBDD)
OPRL (On-Pack Recycling Label)
Facebook
Twitter
Instagram

8. Process Information

Granola is baked at either MGR or 3rd party. At MGR, dry and wet ingredients are mixed according to formulation, then fed onto an oven belt and baked. Baked granola is filled into FIBCs, wrapped in stretch wrap and sent down to Poole.

At Poole, FIBCs are received from MGR or 3rd party and tipped onto the packing lines. Granola is put over the weigher heads and is gravity fed to a form and seal machine. The packs are passed through an x-ray. Sensitivities are 5mm glass, 2mm stainless steel, 2mm non-ferrous, 2mm ferrous. The finished product is packed in to the carton and outer case, which are then stacked on a pallet. When the pallet is full it is covered with a plastic top sheet, wrapped with shrink wrap, labelled and scanned. The wrapped pallets are then stored at room temperature.


9. Packaging Image



10. Revision History

SKU Code Version	Reason
3	Spec reviewed – No changes

11. Approvals

Department	Approved	Approved by	Date
Compliance	Yes	Eloise Boyd 	15/04/2024