



Finished Goods Specification

Sections

1. Finished Goods Overview
2. Labelling
3. Nutritional Information
4. Pallet Plan
5. GS1 Barcodes
6. Suitability
7. Logos
8. Process Information
9. Packaging Image
10. Revision History
11. Approvals

1. Finished Goods Overview

Item Number	80300
Brand	Dorset
Product Type	Breakfast cereal
Category	Muesli
Variant	Fruits Nuts and Seeds
Pack Weight (g)	600 g e
Carton Code	YN01ID02
Packaging Description	Packed into film then cardboard cartons, then into outer cases, 5 per case.

2. Labelling

Legal Descriptor	A blend of rolled and toasted flakes with raisins, pumpkin seeds, apricots and nuts.
On Pack Ingredient Declaration Including Allergens	<p>Ingredients: Dried Fruit, Nuts & Seeds (39%)(Sultanas,Raisins (9%),Sunflower Seeds,Pumpkin Seeds (4%),Golden Raisins(Golden Raisins, Preservative (Sulphur Dioxide)),Diced Dried Apricots (2%)(Apricots, Preservative (Sulphur Dioxide)), Roasted Whole Hazelnuts (1%), Sliced Almonds (1%)), Wholegrain Oat Flakes, Wholegrain Toasted Wheat Flakes, Barley Flakes, Wholegrain Wheat Flakes.</p> <p>Allergy Advice: For allergens, including cereals containing gluten, see ingredients in Bold.</p> <p>May Also Contain: Other Nuts, Other cereals containing gluten.</p>
Storage Information	Once opened, roll the inner bag down tightly then store in a cool, dry place.
Shelf Life (days)	304
Best Before Date Format	dd mm yyyy
Traceability Coding	Julian, Line, Time e.g. (5212 E 10:15)

3. Nutritional Information

Nutrient	Per 100g	Per Portion	% RI* Per Portion
Energy kJ	1591 kJ	715 kJ	9 %
Energy kcal	378 kcal	170 kcal	
Fat	8.3 g	3.7 g	5 %
Saturates	1.2 g	0.5 g	3 %
Carbohydrate	62.0 g	27.9 g	11 %
Sugar	20.5 g	9.2 g	10 %
Fibre	7.0 g	3.2 g	
Protein	10.2 g	4.6 g	9 %
Salt	0.03 g	0.01 g	<1 %
*Reference Intake of an average adult (8400kJ / 2000kcal)			
Serving size	45 g		
Servings per pack	Approximately 13 portions per pack		

4. Pallet Plan

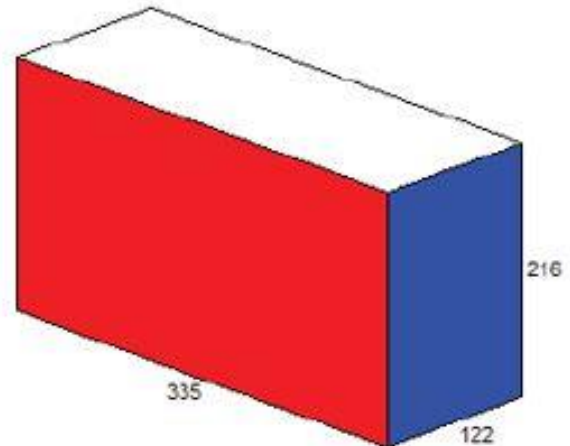
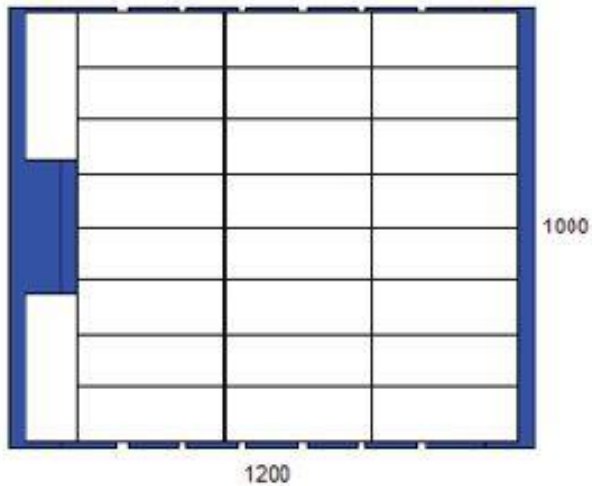
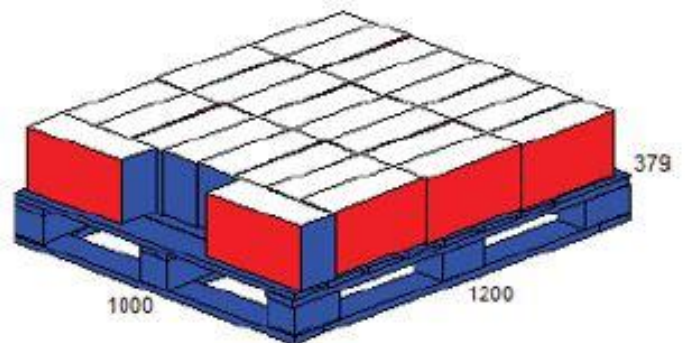
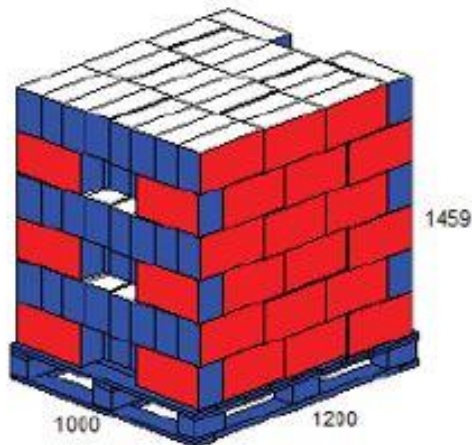
The weights in the below pallet plan are generic weights for this particular pallet plan and should only be used for guidance only.

15 November 2019

Product Name YN UK
 Product Code RY0501
 Datafile Name yn uk 6layers (13/06/2019)
 Load Ref. 1 I (Edited)
 Cube Used 77.2 %
 Area Used 88.6 %
 Pallet type chepblue

26 Case / Layer
 6 Layer / Load
 156 Case / Load

	Length	Width	Height	Net	Gross
Case (OD)	335.0	122.0	216.0 mm	2.750	2.960 Kg
Product	1127.0	976.0	1296.0 mm	429.000	461.760 Kg
Load	1200.0	1000.0	1459.0 mm	461.760	491.760 Kg



5. GS1 Barcodes

Consumer Unit		Traded Unit	
Barcode Number	5018357012558	Barcode Number	15018357016546

6. Suitability

This product does not contain genetically modified organisms (GMO)

Suitable for vegans

Suitable for vegetarian

7. Logos

Vegetarian Society Approved

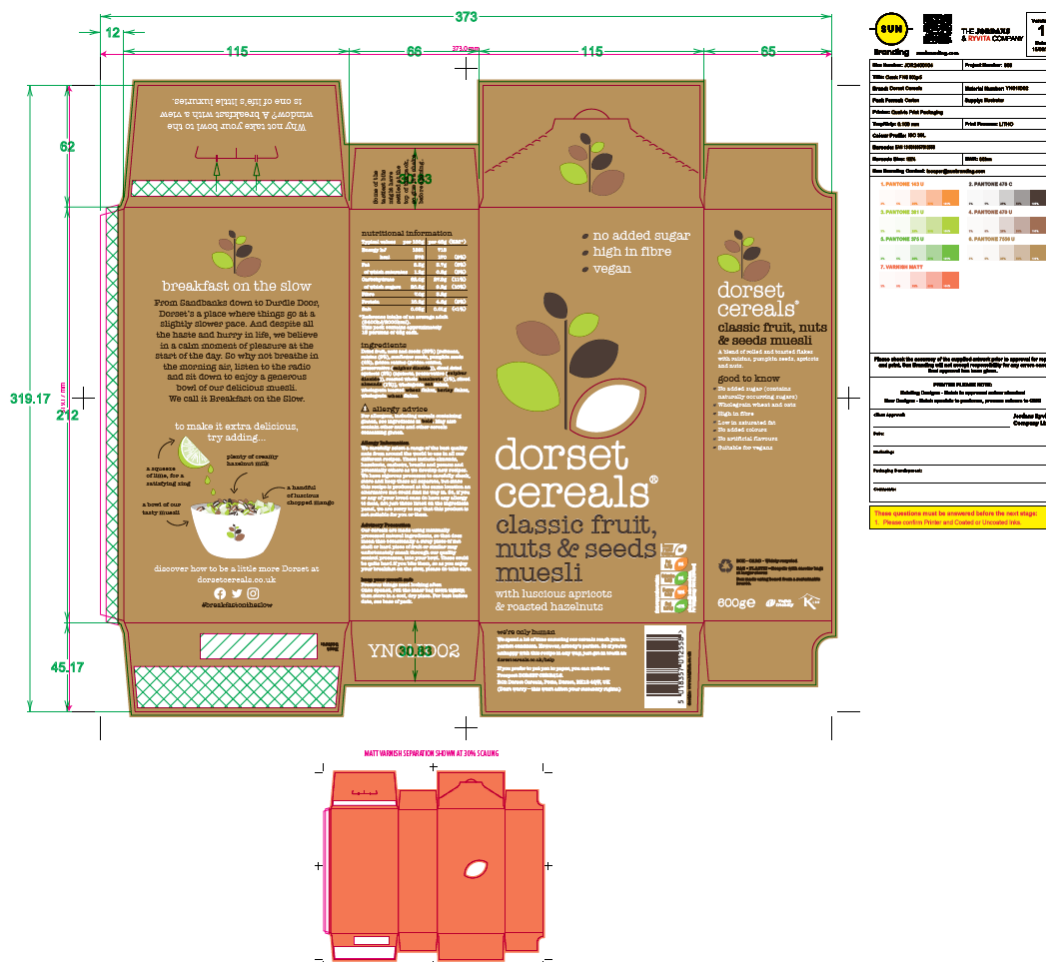
Kosher

Recycle

8. Process Information

Ingredients are picked according to plan ready for processing, one blend is 552kg. The processing involves a fruit breaker and inspection tables where ingredients are hand-graded, and placing flakes on the incline belts, the product is then transferred via belts into IBCs. The IBC is blended for a set amount of time to ensure thorough mix. The IBC is then placed over a multi-head weigh pans which fill into bags using a vertical form fill box machine, is put through a box and case packer. These are then coded and palletised.


9. Packaging Image



10. Revision History

SKU Code Version	Reason
2	Pack code changed from YN01ID01 to YN01ID02
2	Woodland Trust logo removed from artwork
2	May contains changed from Other Gluten Sources, Nuts to Nuts, Other cereals containing gluten.
2	Distributor Spec Amended

11. Approvals

Department	Approved	Approved by	Date
Compliance	Yes	Eloise Boyd 	23/09/2024