

Changed Oct 31, 2025 11:28

Reviewed Oct 31, 2025 11:28

Erudus ID 925f37a59ec84558b06326ca59b5736a

Version 3.0

Status Published

Oatly Matcha Latte

Oatly Oat Drink Matcha Latte 1l 6x1x

PRODUCT DESCRIPTION

A Matcha Made in Heaven. UK's #1 oat drink meets quality Japanese Matcha. Fresh Matcha notes with a hint of vanilla for a balanced taste. Rich, creamy mouthfeel which balances the freshness of matcha. Delicious in iced and hot applications.

| | |
|---------------------------|-------------------------------------|
| Brand | Oatly |
| Manufacturer Product Code | 62352 |
| Product Type | Drink |
| Product Category | Dairy-Free Milk Alternatives |
| Storage Type | Chilled |
| Erudus ID | 925f37a59ec84558b06326ca59b5736a |
| Specification Type | Alternatives (Vegetarian and Vegan) |

Inner Pack GTIN 7394376623523

Outer Case GTIN 27394376623527



INGREDIENTS

Ingredient Declaration

Water, **oats**, rapeseed oil, sugar, organic matcha green tea powder, mineral (calcium carbonate), salt, natural flavor, stabiliser (gellan gum)

Ingredient Statements

Caffeine content: 16 mg/ 100 ml

ALLERGENS

Product Contains:

| | | | |
|--------------------------------------|-----|-------------------------------|----|
| Celery/Celery | No | Mustard | No |
| Cereals Containing Gluten | Yes | Nuts (Tree) | No |
| Barley | No | Almond nuts | No |
| Oats | Yes | Brazil nuts | No |
| Rye | No | Cashew nuts | No |
| Wheat (including Spelt and Khorasan) | No | Hazelnuts | No |
| Crustacea | No | Macadamia (Queensland) nuts | No |
| Eggs | No | Pecan nuts | No |
| Fish | No | Pistachio nuts | No |
| Lupin | No | Walnuts | No |
| Milk | No | Peanuts | No |
| Molluscs | No | Sesame Seeds | No |
| | | Soybeans | No |
| | | Sulphur Dioxide and Sulphites | No |

Allergen Statement On Pack

Contains oats. < 0,1 % of other cereals than oat

FREE FROM CLAIMS

| | | | |
|---------------------------|-----|---------------------------|-----|
| Free From Barley | Yes | Free From Mustard | Yes |
| Free From Celery/Celeriac | Yes | Free From Peanuts | Yes |
| Free From Crustacea | Yes | Free From Rye | Yes |
| Free From Eggs | Yes | Free From Sesame | Yes |
| Free From Fish | Yes | Free From Soybeans | Yes |
| Free From Lactose | Yes | Free From Sulphur Dioxide | Yes |
| Free From Lupin | Yes | Very Low Gluten | Yes |
| Free From Milk | Yes | | |
| Free From Molluscs | Yes | | |

SUPPLEMENTARY INGREDIENT INFORMATION

| | | | |
|--------------------------------|----|-------------------------------|---------|
| Palm Oil | No | Alcoholic Strength %Vol (ABV) | 0 % Vol |
| Hydrogenated Vegetable Oil/Fat | No | CBD Concentration per Unit | 0 mg |
| GM Protein/DNA | No | | |

ADDITIVES

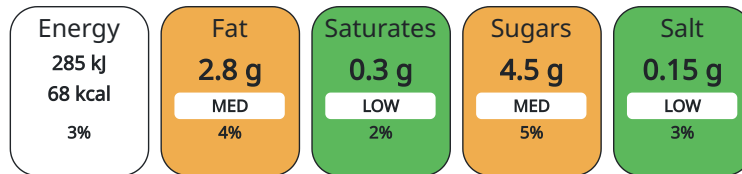
| | | | |
|------------------------------|----|--------------------------|-----|
| <i>Product Contains:</i> | | | |
| Artificial Antioxidants | No | Artificial Flavourings | No |
| Artificial Colours | No | Artificial Preservatives | Yes |
| Artificial Flavour Enhancers | No | Artificial Sweeteners | No |

DIET SUITABILITY

| | | | |
|------------|--------------|-----------------|--------------|
| Vegan Diet | Suitable for | Vegetarian Diet | Suitable for |
| Halal Diet | No | Kosher Diet | No |

NUTRITIONAL INFORMATION AS SOLD

Each 100g/ml portion contains:



of your reference intake.

Typical values per 100g/ml : Energy 68kcal / 285kj

| Nutrient | per 100ml | RI per 100ml | per 50ml serving | RI per 50ml serving |
|---------------------------|-----------|--------------|------------------|---------------------|
| Energy (kJ) | 285 kJ | 3% | 142 kJ | 2% |
| Energy (kcal) | 68 kcal | 3% | 34 kcal | 2% |
| Fat | 2.8 g | 4% | 1.4 g | 2% |
| of which Saturates | 0.3 g | 2% | 0.15 g | 1% |
| of which Mono-unsaturates | < 0.1 g | | < 0.5 g | |
| of which Polyunsaturates | < 0.1 g | | < 0.5 g | |
| Carbohydrate | 7.8 g | 3% | 3.5 g | 1% |
| of which Sugars | 4.5 g | 5% | 2.2 g | 2% |
| of which Polyols | 0 g | | 0 g | |
| of which Starch | 0 g | | 0 g | |
| Fibre | 1 g | | < 0.5 g | |
| Protein | 1.1 g | 2% | < 0.5 g | 1% |
| Salt | 0.15 g | 3% | < 0.5 g | 8% |
| Sodium | < 0.01 mg | | < 0.5 mg | |

| | |
|---------------------------------|-----------------------|
| Serving Size | 50 ml |
| Serving Size Description | Based on 50ml serving |
| Number of Servings | 20 Servings |

Source of Nutritional Information Manufacturers analysis

NUTRITIONAL INFORMATION AS PREPARED

| Nutrient | per 100g/ml prepared | RI per 100g/ml prepared | per 50ml prepared | RI per 50g/ml prepared |
|---------------------------|-----------------------------|--------------------------------|--------------------------|-------------------------------|
| Energy (kJ) | 285 kJ | 3% | 142.5 kJ | 2% |
| Energy (kcal) | 68 kcal | 3% | 34 kcal | 2% |
| Fat | 2.8 g | 4% | 1.4 g | 2% |
| of which Saturates | 0.3 g | 2% | < 0.5 g | 3% |
| of which Mono-unsaturates | < 0.5 g | | < 0.5 g | |
| of which Polyunsaturates | < 0.5 g | | < 0.5 g | |
| Carbohydrate | 7.8 g | 3% | 3.9 g | 2% |
| of which Sugars | 4.5 g | 5% | 2.2 g | 2% |
| of which Polyols | 0 g | | 0 g | |
| of which Starch | 0 g | | 0 g | |
| Fibre | 1 g | | < 0.5 g | |
| Protein | 1.1 g | 2% | < 0.5 g | 1% |
| Salt | 0.15 g | 3% | < 0.5 g | 8% |
| Sodium | < 0.5 mg | | < 0.5 mg | |

Prepared Product Details

Ready to drink straight from carton

VITAMINS AND MINERALS AS SOLD

| Nutrient | per 100ml | RI per 100ml | per 50ml serving | RI per 50ml serving |
|-----------------|------------------|---------------------|-------------------------|----------------------------|
| Calcium | 120 mg | 15% | 60 mg | 8% |

VITAMINS AND MINERALS AS PREPARED

| Nutrient | per 100g/ml prepared | RI per 100g/ml prepared | per 50ml prepared | RI per 50g/ml prepared |
|-----------------|-----------------------------|--------------------------------|--------------------------|-------------------------------|
| Calcium | 120 mg | 15% | 60 mg | 8% |

SUPPLEMENTARY NUTRITIONAL INFORMATION

Fibre Type Fibre Unknown

HFSS (HIGH IN FAT, SALT AND SUGAR)

HFSS Status Yes

HFSS Score -1

HANDLING & STORAGE INFORMATION

Directions For Use

Shake before use

Storage Instructions

Cold storage (2-8°C)

Storage Instructions After Opening

Once opened, store chilled (<8°C, lower limit 2°C) and consume within 5 days

Shelf Life from Time of Production 60 Days

Shelf Life From Opening 5 Days

ACCREDITATIONS/
CERTIFICATIONS/
ASSURANCE
SCHEMES

| |
|--------------------------|
| BRCGS Certified |
| BRCGS Food Safety |
| Sedex |

| |
|---------------------------------------|
| BRCGS Agents and Brokers |
| BRCGS Storage and Distribution |

ORIGIN

| | |
|---|---------------|
| Product Country of Origin | Sweden |
| Place of Provenance | Sweden |
| Origin of the Primary Ingredient | Japan, Sweden |

PRODUCT
CHARACTERISTICS

| | |
|--|-----|
| Standards Testing | |
| Is shelf life testing undertaken? | Yes |
| Commercially Sterile | Yes |

CONFIGURATION

| | | | |
|---|---------|---|----|
| Case Configuration | | Inner Pack Configuration | |
| Variable Inner Components in Outer Case | No | Is Inner Pack Splittable? | No |
| Total Quantity of Inner Components in Outer Case | 6 Units | Quantity of Inner Components in Inner Pack | 1 |
| Total Quantity of Inner Packs in Outer Case | 6 Units | | |
| Is the Outer Case Splittable? | No | | |

PRODUCT
WEIGHTS

| | |
|--------------------------------|--------|
| Inner Component | |
| Outer Case | |
| Outer Case Gross Weight | 6.5 kg |
| Outer Case Net Weight | 6.2 kg |

PRODUCT
DIMENSIONS

| | |
|--------------------------|--------|
| Inner Component | |
| Outer Case | |
| Outer Case Depth | 229 mm |
| Outer Case Width | 162 mm |
| Outer Case Height | 218 mm |

PALLET
INFORMATION

| | | | |
|---|-----------|----------------------------|--------------------|
| Quantity of Cases Per Pallet Layer | 31 Cases | Pallet Type | UK Standard Pallet |
| Quantity of Layers Per Pallet | 5 Layers | Pallet Height | 1.25 MTR |
| Quantity of Cases Per Pallet | 155 Cases | Pallet Gross Weight | 1040 kg |

OTHER
INFORMATION

| | |
|-----------------------------|--------|
| Value Added Tax Rate | No VAT |
|-----------------------------|--------|

CONTACT
INFORMATION

Address
Oatly
Link House
78 Cowcross St
Farringdon
London
EC1M 6EJ
United Kingdom

P: (Phone) +46 (010) 205 10 20

The information on the [Erudus System](#) has been supplied by the manufacturers of the products and, whilst the owners of the Erudus System take steps to ensure the information is regularly updated, they give no warranty and no guarantee that the information is accurate. Product information and ingredients may change, please always read product labels carefully in addition to using the information provided by Erudus.

We do not accept liability for any inaccuracies or incorrect information contained on this site.
Please visit <http://www.erudus.com/terms-and-conditions> for full terms and conditions.