






Text size

Top Flap	Heading 10pt			
Front Panels	Main Heading 12pt	Heading 7.5pt	Text 6pt	Flash 7pt
Side Panels	Product heading 8pt	Text 7pt		




Weleda UK Ltd

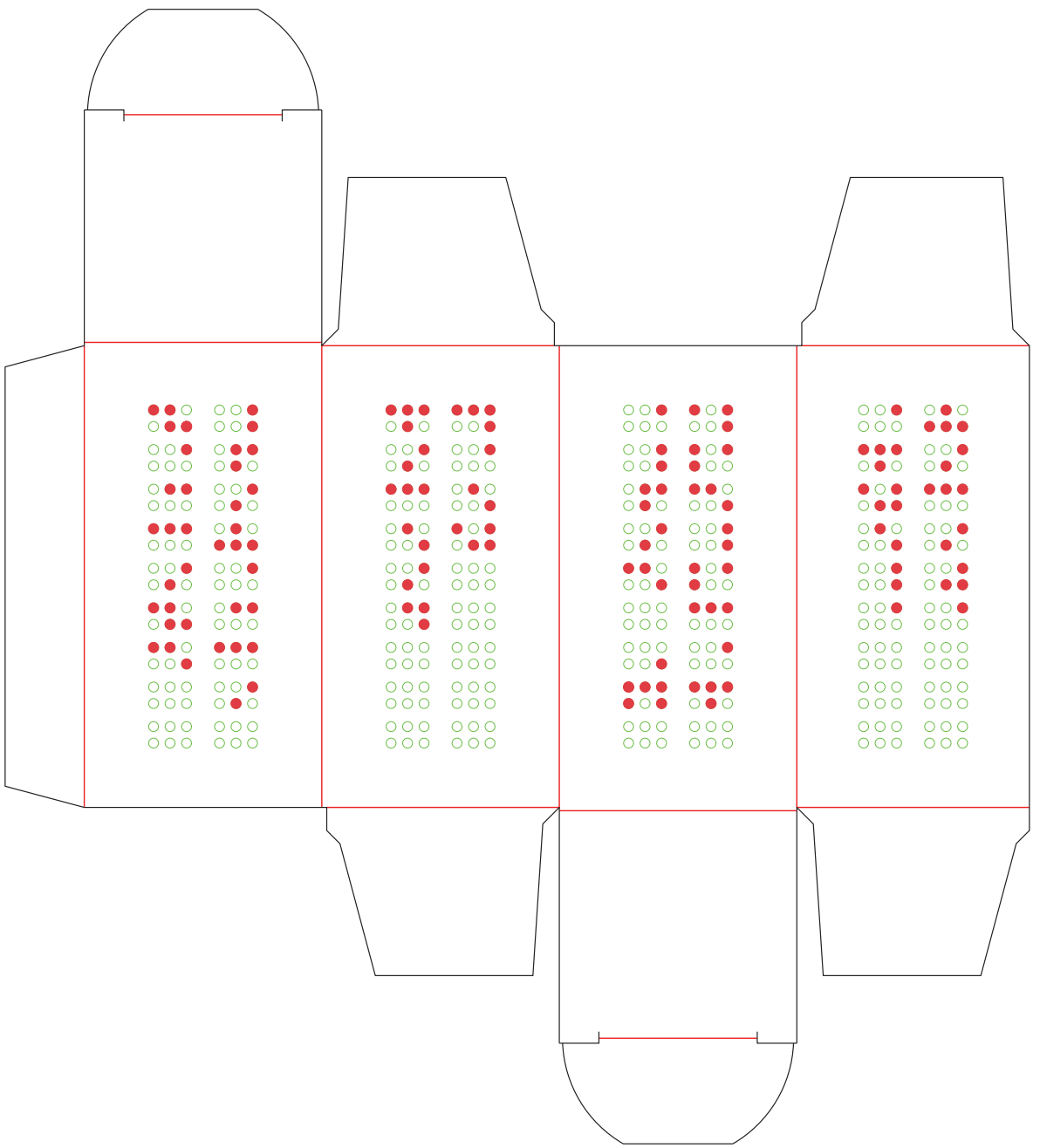
Product	Weleda Arnica Muscular Aches & Pain Relief Chewable Tablets Carton			
Item code	C/708051/5	Barcode	5013455060043	
Keyline	MEDICA			
Size	36 x 36 x 70 mm	Braille	YES	
Braille	Weleda Arnica Muscular Aches & Pain Relief Chewable Tablets			
Colours	Pantone 2747 C		Pantone 715 C	
	Pantone 1235 C			
Draft Version	V3 (19-9-24)			



BRAILLE READS: Weleda Arnica Muscular Aches & Pain Relief Chewable Tablets




Weleda UK Ltd

Product	Weleda Arnica Muscular Aches & Pain Relief Chewable Tablets Carton			
Item code	C/708051/5	Barcode	5013455060043	
Keyline	MEDICA			
Size	36 x 36 x 70 mm	Braille	YES	
Braille	Weleda Arnica Muscular Aches & Pain Relief Chewable Tablets			
Colours	Pantone 2747 C		Pantone 715 C	
	Pantone 1235 C			
Draft Version	V3 (19-9-24)			



BRAILLE READS: Weleda Arnica Muscular Aches & Pain Relief Chewable Tablets

Weleda UK Ltd

Product	Weleda Arnica Muscular Aches & Pain Relief Chewable Tablets Carton			
Item code	C/708051/5	Barcode	5013455060043	
Keyline	MEDICA			
Size	36 x 36 x 70 mm	Braille	YES	
Braille	Weleda Arnica Muscular Aches & Pain Relief Chewable Tablets			
Colours	Pantone 2747 C		Pantone 715 C	
	Pantone 1235 C			
Draft Version	V3 (19-9-24)			