

**GCP**  
CLOSSOP CARTONS & PRINT

Raymond Joseph Works, Haigh Avenue, Whitehill Industrial Estate,  
Reddish, Stockport, Cheshire SK4 1NU  
T: 0161 480 3568 E: sales@gcp-uk.co.uk  
[www.gcp-uk.co.uk](http://www.gcp-uk.co.uk)

GCP is the trading name of Glassop Carton and Print Limited

**GCP Job Number:**

11284

**Customer:**





Walkers Chocolates

**Job Name:**

Divine Mint Thins

**Product Ref:**

0175035C




Black

Cyan

Magenta

Yellow



PMS 10127

We make every effort to ensure that our colour management configuration matches the Process colour or Pantone® colour specified.  
All our devices are monitored and calibrated to within the allowed tolerances for the production condition.

**Litho or Coated Varnish:**

WB Varnish Gloss

**Litho or Coated Varnish:**

**Sheet Embellishment:**

**Colour Standard:**

ISO Coated v2 (ECI)

**Unit Size:**

244.25 x 301

**CAD Reference:**


gcp11337

**Proof Date:**

16/5/2023

**Proof Version:**

1

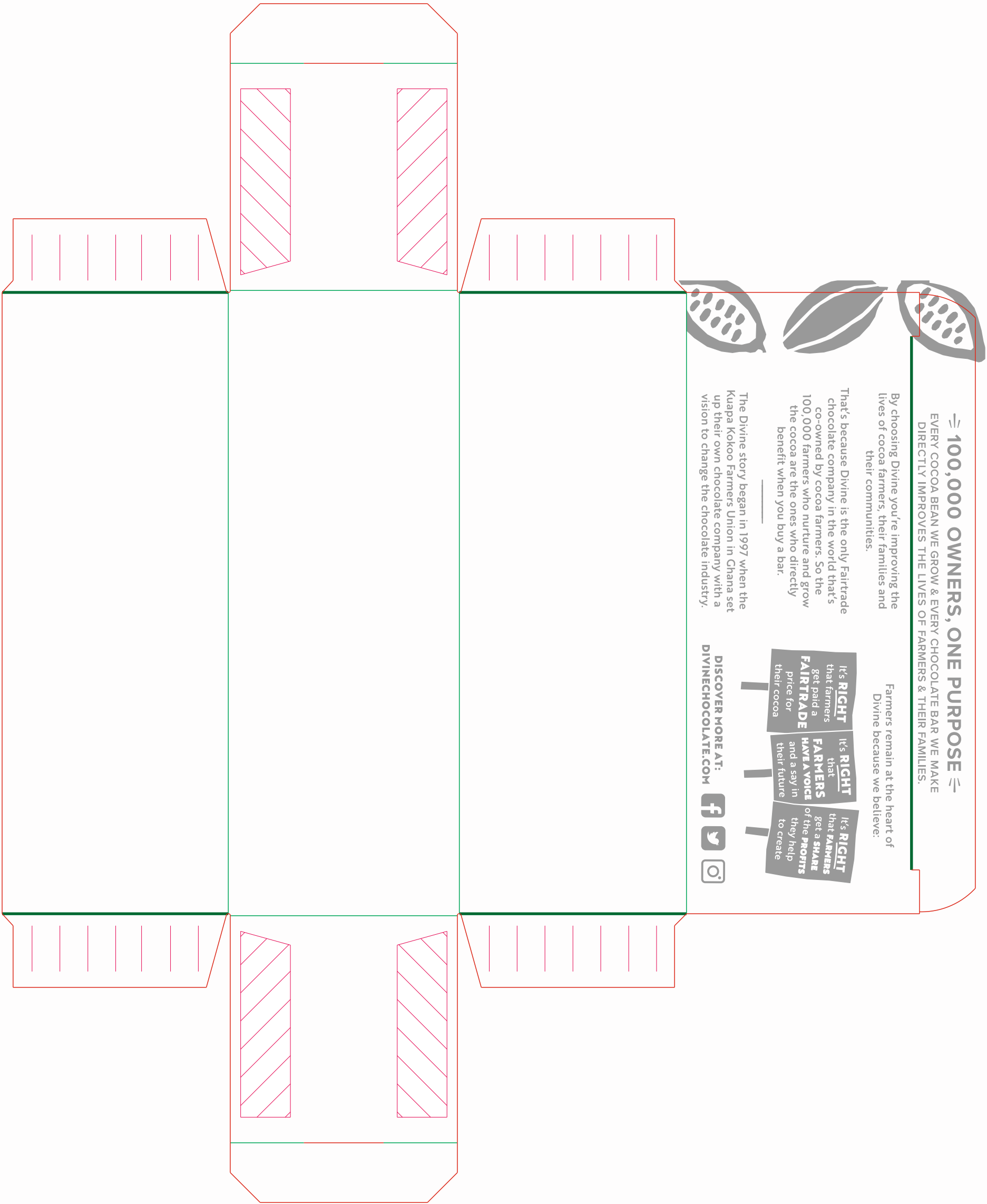



Please check this proof thoroughly, making sure you are satisfied with the content as no orders will proceed to print until the proof is approved. Any delay in returning the approval may affect your delivery date. Note, we cannot be held responsible for any incorrect information after sign off. Therefore please can you ensure that all the text, especially spellings, and any other graphics are correct. Should any corrections be required, please mark them clearly. On approval could you complete and return the form to GCP via eMail or post.

As a PDF proof, for a more accurate representation of the printed job please ensure your PDF viewer is set correctly.

How to view this PDF file.  
You may need to adjust your Acrobat Preferences as follows: Edit Menu> Preferences> Page Display> Check Overprint Preview is On. The PDF file may contain Opaque White, additional Varnishes or other processes that are displayed as a different colour.

working towards  
**ISO 12647-2:2013**






**GCP**  
CLOSSOP CARTONS & PRINT

Raymond Joseph Works, Haigh Avenue, Whitehill Industrial Estate,  
Reddish, Stockport, Cheshire SK4 1NU  
T: 0161 480 3568 E: sales@gcp-uk.co.uk  
**www.gcp-uk.co.uk**

GCP is the trading name of Glassop Carton and Print Limited


<b>GCP Job Number:</b>	11284
<b>Customer:</b>	Walkers Chocolates
<b>Job Name:</b>	Divine Mint Thins
<b>Product Ref:</b>	0175035C



Blk

We make every effort to ensure that our colour management configuration matches the Process colour or Pantone® colour specified.  
All our devices are monitored and calibrated to within the allowed tolerances for the production condition.

<b>Litho or Coated Varnish:</b>	WB Varnish Gloss
<b>Litho or Coated Varnish:</b>	
<b>Sheet Embellishment:</b>	
<b>Colour Standard:</b>	ISO Coated v2 (ECI)
<b>Unit Size:</b>	244.25 x 301
<b>CAD Reference:</b>	gcp11337
<b>Proof Date:</b>	16/5/2023
<b>Proof Version:</b>	1



Please check this proof thoroughly, making sure you are satisfied with the content as no orders will proceed to print until the proof is approved. Any delay in returning the approval may affect your delivery date. Note, we cannot be held responsible for any incorrect information after sign off. Therefore please can you ensure that all the text, especially spellings, and any other graphics are correct. Should any corrections be required, please mark them clearly. On approval could you complete and return the form to GCP via eMail or post.

As a PDF proof, for a more accurate representation of the printed job please ensure your PDF viewer is set correctly.

How to view this PDF file.  
You may need to adjust your Acrobat Preferences as follows: Edit Menu> Preferences> Page Display> Check Overprint Preview is On. The PDF file may contain Opaque White, additional Varnishes or other processes that are displayed as a different colour.

working towards

**ISO 12647-2:2013**