



Finished Goods Specification

Sections

1. Finished Goods Overview
2. Labelling
3. Nutritional Information
4. Pallet Plan
5. GS1 Barcodes
6. Suitability
7. Logos
8. Process Information
9. Packaging Image
10. Revision History
11. Approvals

1. Finished Goods Overview

Item Number	80299
Brand	Dorset
Product Type	Breakfast cereal
Recipe Number	Q372-256
Recipe Version Number	1
Category	Muesli
Variant	Simply Fruity
Pack Weight (g)	630 g e
Carton Code	YN01IB02
Film Code	FJ00AA01
Packaging Description	Packed into film then cardboard cartons, then into outer cases, 5 per case.

2. Labelling

Legal Descriptor	A blend of rolled and toasted flakes with sweetened dried papaya and pineapple, sultanas and raisins.
On Pack Ingredient Declaration Including Allergens	<p>Ingredients: Dried fruit [sweetened dried papaya (9%) (sugar syrup, papaya, acidity regulator (citric acid), preservative (sulphur dioxide)), sultanas (9%), raisins (7%), sweetened dried pineapple (3.5%) (sugar, pineapple, acidity regulator (citric acid), preservative (sulphur dioxide))], barley flakes, wholegrain wheat flakes, wholegrain oat flakes, wholegrain toasted and malted wheat flakes (wheat, barley malt extract).</p> <p>Allergy Advice: For allergens, including cereals containing gluten, see ingredients in Bold.</p> <p>May Also Contain: Nuts, Other Gluten Sources.</p>
Storage Information	Once opened, roll inner bag down tightly and store in a cool, dry place.
Shelf Life (days)	395
Best Before Date Format	dd mm yyyy
Traceability Coding	Julian, Line, Time e.g. (5212 E 10:15)

The allergens listed above are based on the 14 EU allergens. If products are being sold internationally, please contact us for further allergen information.

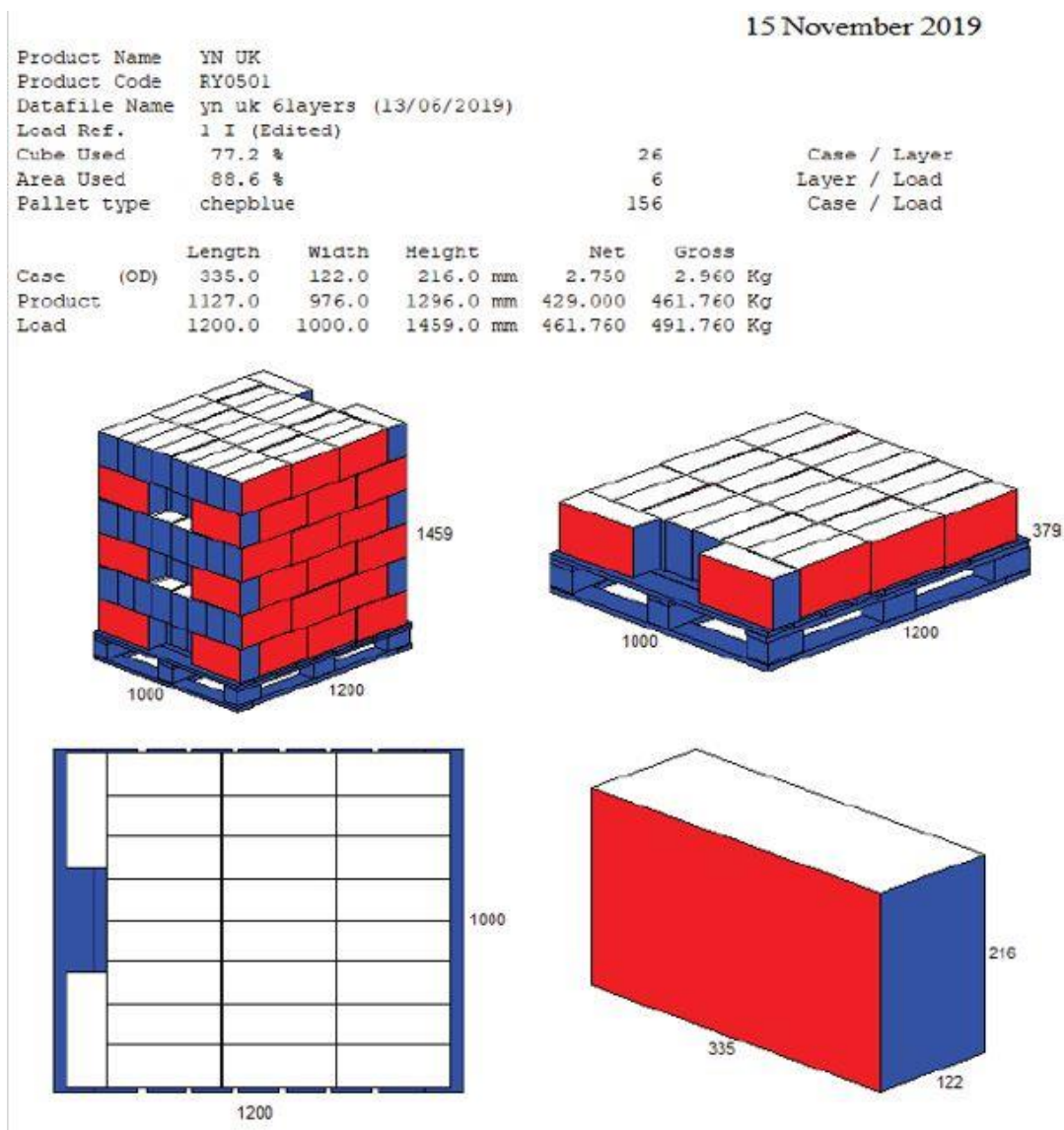
3. Nutritional Information

Nutrient	Per 100g	Per Portion	% RI* Per Portion
Energy kJ	1475 kJ	664 kJ	8 %
Energy kcal	349 kcal	157 kcal	
Fat	2.9 g	1.3 g	2 %
Saturates	0.6 g	0.3 g	1 %
Carbohydrate	68.4 g	30.8 g	12 %
Sugar	20.1 g	9.0 g	10 %

Fibre	7.3 g	3.3 g	
Protein	8.6 g	3.9 g	8 %
Salt	0.05 g	0.02 g	<1 %
*Reference Intake of an average adult (8400kJ / 2000kcal)			
Serving size	45 g		
Servings per pack	Approximately 14 portions per pack		

4. Pallet Plan

The weights in the below pallet plan are generic weights for this particular pallet plan and should only be used for guidance only.



5. GS1 Barcodes

Consumer Unit		Traded Unit	
Barcode Number	5018357012534	Barcode Number	15018357016522

6. Suitability

This product does not contain genetically modified organisms (GMO)
Suitable for vegans

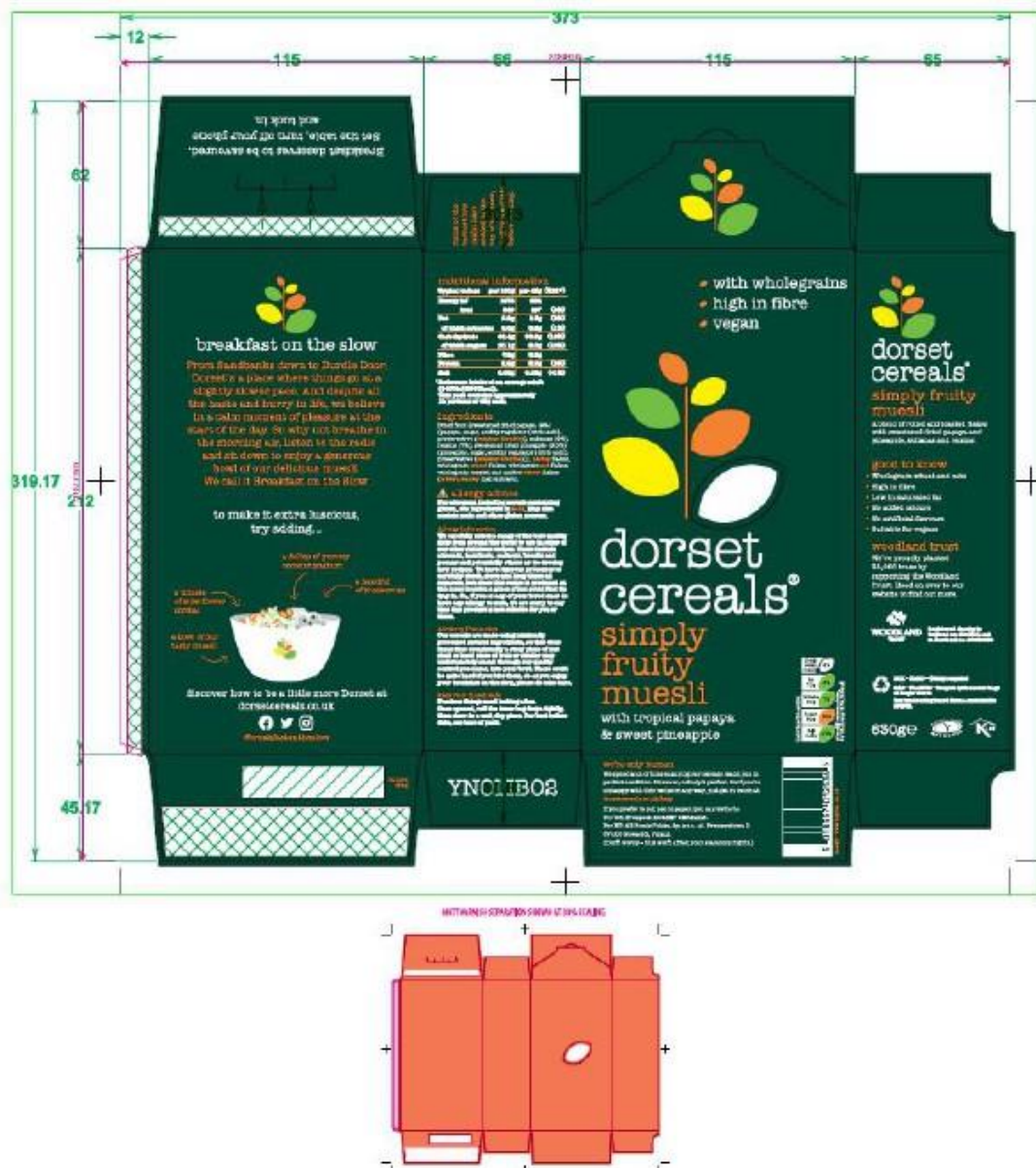
7. Logos

Woodland Trust
Vegetarian Society Approved
Kosher (KLBD)
Recycle

8. Process Information

All ingredients are subject to a sampling and testing regime upon intake. Ingredients are scanned then decanted into a blender and mixed for the required amount of time. The blended recipe is put over the weigher heads and is gravity fed to a form and seal machine. The packs are passed through an x-ray. Sensitivities are 5mm glass, 2mm stainless steel, 2mm non-ferrous, 2mm ferrous. The finished product is packed in to the outer case, which are then stacked on a pallet. When the pallet is full it is covered with a plastic top sheet, wrapped with shrink wrap, labelled and scanned. The wrapped pallets are then stored at room temperature.


9. Packaging Image



10. Revision History

SKU Code Version	Reason
3	Shelf life extended to 395 days.

11. Approvals

Department	Approved	Approved by	Date
Compliance	Yes	Eloise Boyd 	15/04/2020