



## Finished Goods Specification

---

### Sections

1. Finished Goods Overview
2. Labelling
3. Nutritional Information
4. Pallet Plan
5. GS1 Barcodes
6. Suitability
7. Logos
8. Process Information
9. Packaging Image
10. Revision History
11. Approvals

## 1. Finished Goods Overview

Item Number	80478
Brand	Dorset
Product Type	Breakfast Cereals
Category	Granola
Variant	Berry
Pack Weight (g)	450 g e
Carton Code	YQ01LC01
Packaging Description	Packed into printed film and then into printed, coded cartons and then into cardboard shelf ready outer cases, 5 units per case

## 2. Labelling

Legal Descriptor	Gently baked oats and berries with pumpkin seeds
On Pack Ingredient Declaration Including Allergens	<p>Ingredients: Wholegrain <b>OAT</b> flakes (67%), golden syrup (partially inverted sugar syrup), vegetable oil (rapeseed and sunflower in varying proportions), pumpkin seeds (3.5%), freeze dried raspberry pieces (1.5%), raspberry purée (1.5%), freeze dried blackcurrants (1.0%), blackberry purée (0.5%), natural flavouring.</p> <p>Allergy Advice: For allergens, including cereals containing gluten, see ingredients in <b>BOLD</b>.</p> <p>May also contain nuts, other cereals containing gluten.</p>
The percentages/g per 100g statements within/following the ingredients list are calculated based on UK/EU QUID regulations - this uses quantities used in manufacture and can total more than 100% due to water loss. For your reference there is 62% total wholegrain in this finished product. For further ingredient breakdown, contact the Central Technical Dept.	
Storage Information	After each use, roll down the bag, close with a clip and store in a cool and dry place.
Shelf Life (days)	320
Best Before Date Format	dd mm yyyy
Traceability Coding	Line, Julian, Time e.g. (LA 5212 10:15)

The allergens listed above are based on the 14 EU allergens. If products are being sold internationally, please contact us for further allergen information.

## 3. Nutritional Information

Nutrient	Per 100g	Per Portion	% RI* Per Portion
Energy kJ	1948 kJ	876 kJ	10 %
Energy kcal	464 kcal	209 kcal	
Fat	17.6 g	7.9 g	11 %
Saturates	2.1 g	1.0 g	5 %
Carbohydrate	63.3 g	28.5 g	11 %
Sugar	17.2 g	7.7 g	9 %

Fibre	5.7 g	2.6 g	
Protein	10.3 g	4.6 g	9 %
Salt	0.03 g	0.01 g	<1 %
*Reference Intake of an average adult (8400kJ / 2000kcal)			
Serving size	45 g		
Servings per pack	Approximately 10 portions per pack		

#### 4. Pallet Plan

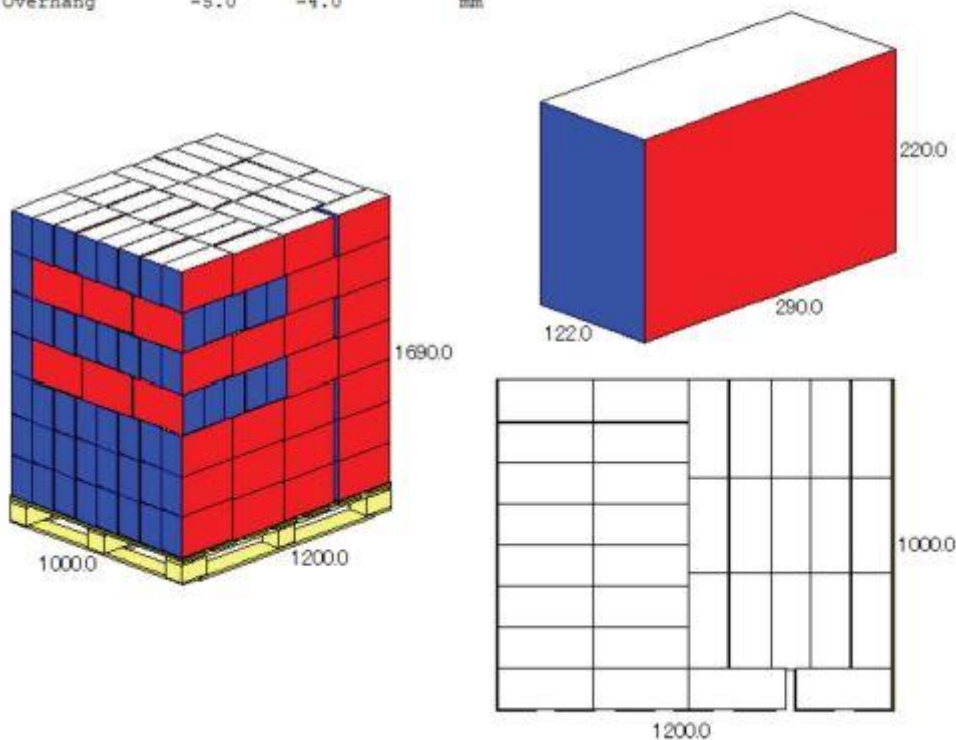
The weights in the below pallet plan are generic weights for this particular pallet plan and should only be used for guidance only.

Product Name AUS DORSET  
Product Code 30766  
Analysis Date 13/03/2020  
Load Ref. 1 T  
Cube Used 96.5 %  
Area Used 97.3 %  
Pallet type UKSTD

Pallet plan: RY0516

33 Case / Layer  
7 Layer / Load  
231 Case / Load

	Length	Width	Height	Net	Gross	Volume
Case (OD)	290.0	122.0	220.0 mm	2.050	2.330 Kg	7783 cm <sup>3</sup>
Load	1200.0	1000.0	1690.0 mm	538.230	563.230 Kg	2.03 m <sup>3</sup>
Overhang	-5.0	-4.0	mm			



#### 5. GS1 Barcodes

Consumer Unit		Traded Unit	
Barcode Number	5018357804788	Barcode Number	15018357015723

#### 6. Suitability

This product does not contain genetically modified organisms (GMO)
Suitable for vegetarians

#### 7. Logos

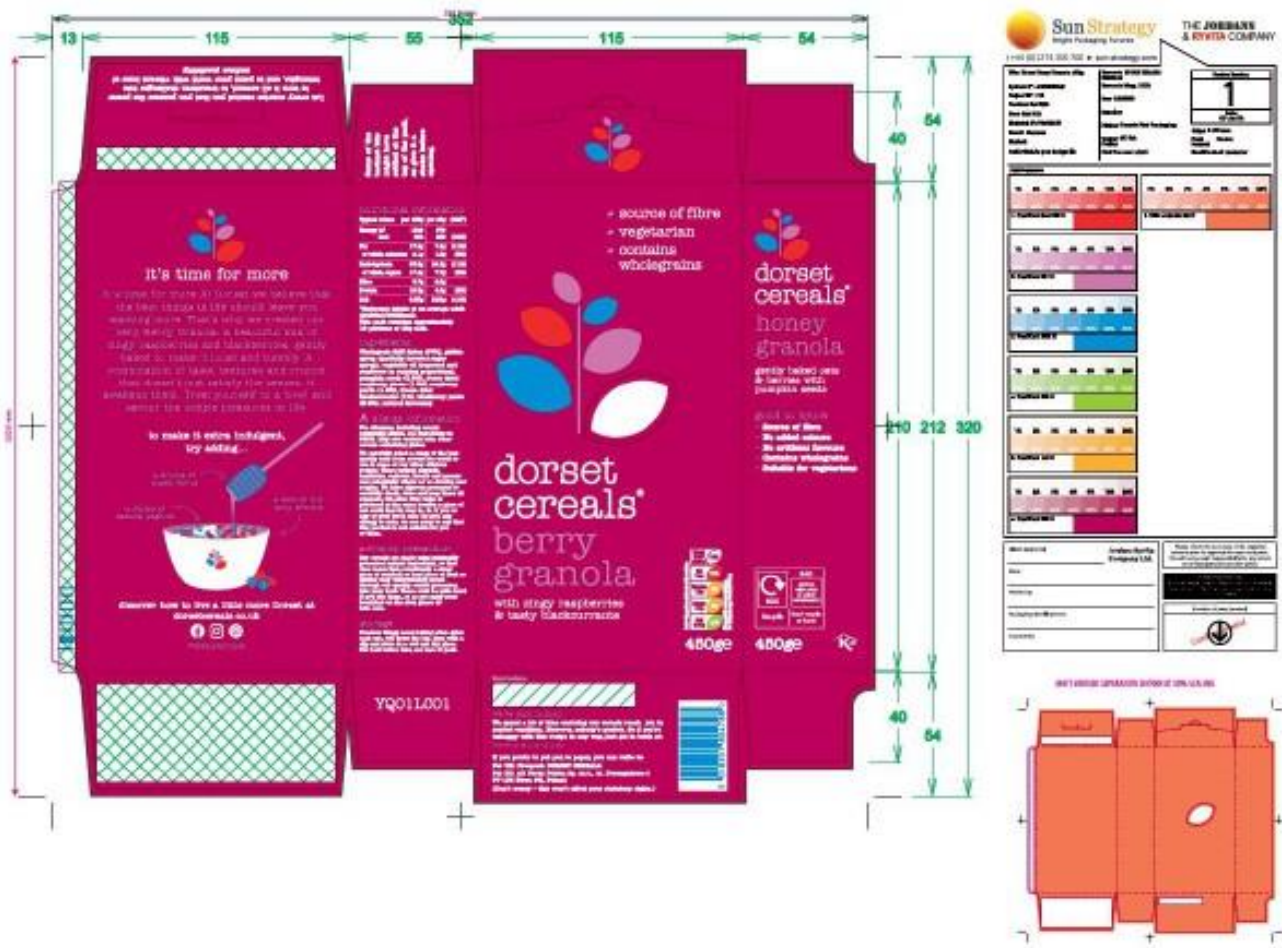
Kosher (KLBD)
OPRL (On-Pack Recycling Label)
Facebook
Pinterest
Instagram

## 8. Process Information

Granola is baked at either MGR or 3rd party. At MGR, dry and wet ingredients are mixed according to formulation, then fed onto an oven belt and baked. Baked granola is filled into FIBCs, wrapped in stretch wrap and sent down to Poole.

At Poole, FIBCs are received from MGR or 3rd party and tipped onto the packing lines. Granola is put over the weigher heads and is gravity fed to a form and seal machine. The packs are passed through an x-ray. Sensitivities are 5mm glass, 2mm stainless steel, 2mm non-ferrous, 2mm ferrous. The finished product is packed in to the carton and outer case, which are then stacked on a pallet. When the pallet is full it is covered with a plastic top sheet, wrapped with shrink wrap, labelled and scanned. The wrapped pallets are then stored at room temperature.


## 9. Packaging Image



## 10. Revision History

SKU Code Version	Reason
3	Spec reviewed – No changes

## 11. Approvals

Department	Approved	Approved by	Date
Compliance	Yes	Eloise Boyd 	15/04/2024