



PROPER

PRODUCT SPECIFICATION

PRODUCT	Proper Corn Sweet Cinnamon	WEIGHT/S	90g
---------	----------------------------	----------	-----

CONTACTS

SALES (A/C Manager complete)			
OPERATIONS*	Chris Hynes (General Manager)	Chris.h@warpsnacks.com	+44(0)7551380093
TECHNICAL*	James Blackband (Head of Technical)	Jamesb@warpsnacks.com	+44(0)7971720250
*EMERGENCY CONTACTS			

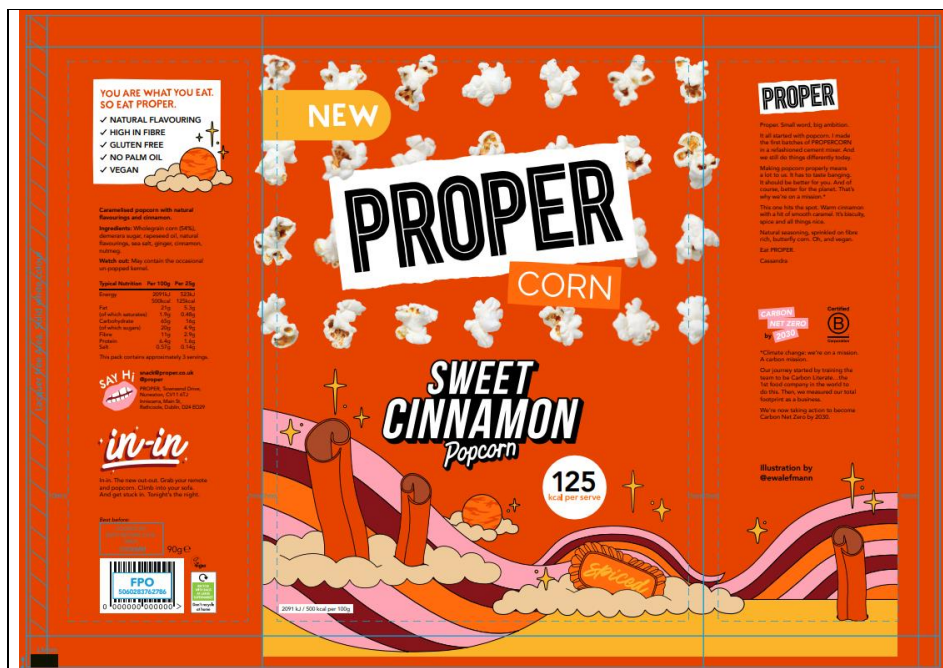
ADDRESS (Company & Manufacture)	Proper, Townsend Drive, Attleborough Fields, Nuneaton CV11 6TJ, UK snack@proper.co.uk www.proper.co.uk
---------------------------------------	--

CODES




PACK WEIGHT	RETAIL UNIT BARCODE	OUTER CASE BARCODE	WARP CASE SKU NO/S
90g	5060283762786	15060283762783	x8 Hulu90SRP8

Meursing Code (for exports)	7011
-----------------------------	------

ARTWORK – 90g



LEGAL DESCRIPTION	Caramelised popcorn with natural flavourings and cinnamon
SHELF LIFE (Best before)	180 days (6 months) from production date
PRODUCTION CODING FORMAT	DD.MM.YY Line, Julian code & time Eg: 10.11.22 N10 1319 9:13 (+ Date of production for product exported to UAE)
STORAGE	Store in a cool dry place.
INGREDIENT DECLARATION	Ingredients: Ingredients: Wholegrain corn (54%), demerara sugar, rapeseed oil, natural flavourings, sea salt, ginger, cinnamon (0.1%), nutmeg.
ALLERGENS DECLARED	None
PRECAUTIONARY ALLERGEN STATEMENT	None. (No labelling required regarding allergens as no longer produced in a factory that handles milk).
WARNING/S	May contain the occasional un-popped kernel.

NUTRITION INFORMATION	<table><tr><th colspan="2">Nutrition Information</th><th>Per 100g</th></tr><tr><td>Energy (kJ)</td><td></td><td>2091</td></tr><tr><td>Energy (kcal)</td><td></td><td>500</td></tr><tr><td>Fat (g)</td><td></td><td>21.0</td></tr><tr><td>of which saturates (g)</td><td></td><td>1.9</td></tr><tr><td>Carbohydrates (g)</td><td></td><td>65.0</td></tr><tr><td>of which sugars (g)</td><td></td><td>20.0</td></tr><tr><td>Fibre (g)</td><td></td><td>11.0</td></tr><tr><td>Protein (g)</td><td></td><td>6.4</td></tr><tr><td>Salt (g)</td><td></td><td>0.57</td></tr></table>	Nutrition Information		Per 100g	Energy (kJ)		2091	Energy (kcal)		500	Fat (g)		21.0	of which saturates (g)		1.9	Carbohydrates (g)		65.0	of which sugars (g)		20.0	Fibre (g)		11.0	Protein (g)		6.4	Salt (g)		0.57
Nutrition Information		Per 100g																													
Energy (kJ)		2091																													
Energy (kcal)		500																													
Fat (g)		21.0																													
of which saturates (g)		1.9																													
Carbohydrates (g)		65.0																													
of which sugars (g)		20.0																													
Fibre (g)		11.0																													
Protein (g)		6.4																													
Salt (g)		0.57																													
NUTRITION CLAIM/S	Kcal per serving flash on front of pack. High fibre																														
CLAIMS ON PACK	Natural flavouring Vegan Palm oil free																														
TRADEMARKED LOGOS	PROPER, Vegan Society, Kosher Beth Din London, B Corp																														
RECYCLING INFORMATION (retail pack)	<div>Film<div></div></div> <div>Box<div></div></div> <p>Note mandatory recycling information for France not currently included. For French export Triman & instruction required:</p> <p>FR: </p>																														
ON-PACK MARKETING TEXT FOR BRAND	<p>Proper. Small word, big ambition.</p> <p>It all started with popcorn. I made the first batches of PROPERCORN in a refashioned cement mixer. And we still do things differently today.</p> <p>Making popcorn properly means a lot to us. It has to taste banging. It should be better for you. And of course, better for the planet. That's why we're on a mission.*</p> <p>Sweet & Salty. An absolute classic. We use Demerara sugar to help give our popcorn its distinctive, caramelised glaze. This, with a salty hit, makes it the best of both worlds.</p> <p>Natural seasoning, sprinkled on fibre rich, butterfly corn. Oh, and vegan.</p> <p>Eat PROPER</p>																														



PROPER

PRODUCT SPECIFICATION

	Cassandra
	CARBON NET ZERO by 2030 *Climate change: we're on a mission. A carbon mission. Our journey started by training the team to be Carbon Literate...the 1st food company in the world to do this. Then we measured our total footprint as a business. We're now taking action to become Carbon Net Zero by 2030.

ALLERGENS & DIETARY INFORMATION

ALLERGENS

KEY

Allergen not present in finished product	Allergenic ingredient used in this product / intentional	Allergen used on site, but not in this product	Allergen may be present due to incoming raw material specification limits regarding contamination controls
--	--	--	--

PRODUCT NAME	Proper Corn Sweet & Salty
PEANUTS	
GROUND NUTS	
SESAME	
FISH	
BARLEY	
SHELLFISH	
MOLLUSCS	
EGGS	
DAIRY	
SOY	
GLUTEN	
MUSTARD	
CELERY	
SO2 (SULPHUR DIOXIDE)	
LUPIN	

DIETARY

SUITABLE FOR VEGETARIANS	Y (certified as vegan)
SUITABLE FOR VEGANS	Y (certified)
SUITABLE FOR COELIACS (FREE FROM GLUTEN <20ppm)	Y
SUITABLE FOR KOSHER	N



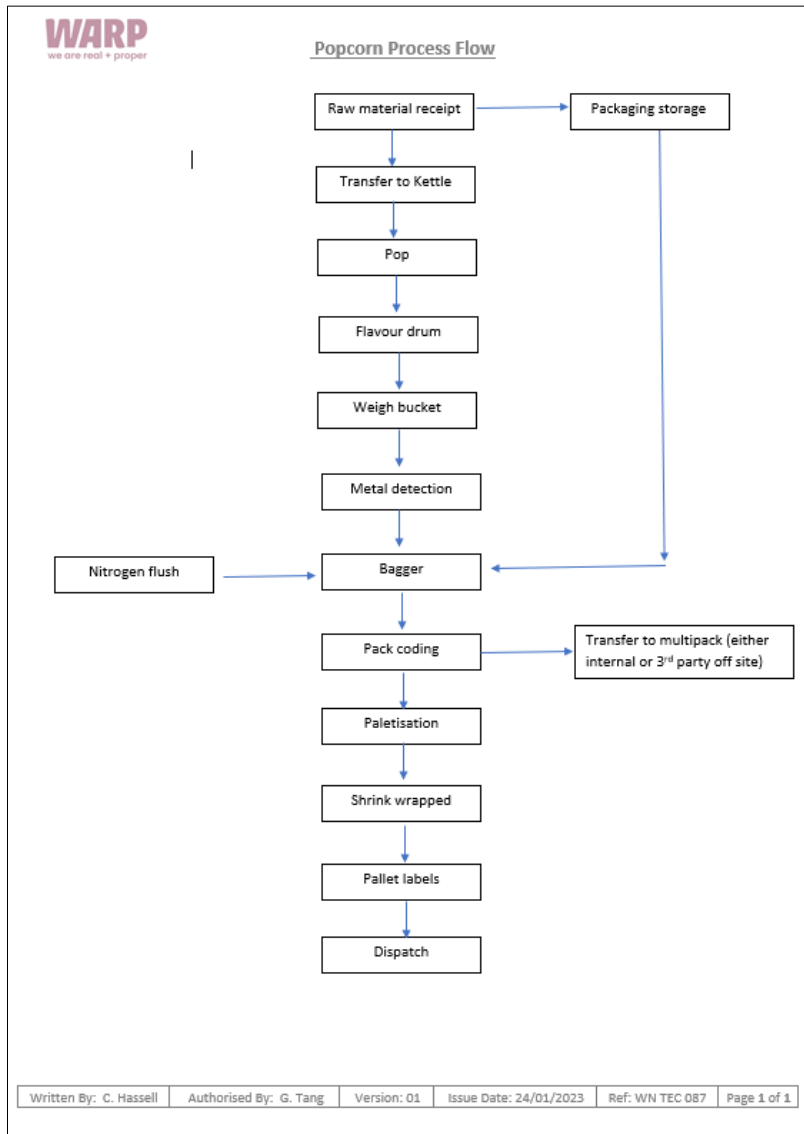
PRODUCT SPECIFICATION

SUITABLE FOR HALAL	Y (not certified)
--------------------	-------------------

FINISHED PRODUCT STANDARDS ORGANOLEPTIC

Typical visual:

	GREEN	AMBER	RED
Visual	Light golden brown coated popcorn with dark, speckled brown seasoning	Over/ Under caramelised. High/ low concentration of speckled brown seasoning.	Burnt / no caramelisation. Excessive / no visible seasoning
Aroma	Sweet biscuit / caramel	Little aroma of brown sugar / caramel	Excessive caramel/ sweet aroma or no aroma
Flavour	Upfront subtle caramel sweetness, biscuit spice	Unbalanced spice / sweetness	Too much spice / excessive sweet caramel / salt. Not enough spice / sweet caramel. Burnt
Texture	Initial crunch, light chew	Majority light / crunchy / minority foamy / chewy	No crunch / excessively chewy/ Stale / powdery





PRODUCT SPECIFICATION

CCP: METAL DETECTION

All product tested to sensitivity: Ferrous 2.0mm/Non-Ferrous 2.5mm/Stainless Steel 3.0mm



PROPER

PRODUCT SPECIFICATION

MICROBIOLOGICAL

ANALYSIS	TARGET (Max Permissible Limits)	UNITS	METHOD (Testing by UKAS accredited laboratory)
TVC (Total Viable/Plate Count)	10 ⁴	cfu/g	M001
ENTEROBACTERIACAE	10 ²	cfu/g	M009
E. COLI	<10	cfu/g	M011
S. AUREUS	<20	cfu/g	M013
YEAST & MOULDS	<1000	cfu/g	M022
BACILLUS CEREUS	<10	cfu/g	M015
SALMONELLA SPP	Absent	In 25g	M041
LISTERIA SPP	Absent	In 25g	M035

	Method	Unit of Measure	Target	Frequency of Testing
Salmonella	using single selective enrichment in RV Broth and plating on XLD and BGA.	cfu/g	Absent in 25g	Annually
Listeria monocytogenes	N/A		N/A	N/A
Aerobic mesophilic Total Viable Count (TVC)	BS EN ISO 4833:2003	cfu/g	<10,000	Annually
Enterobacteriaceae	BS ISO 21528-2:2004	cfu/g	<100	Annually
Escherichia coli	BS EN ISO 16654:2001	cfu/g	<100	Annually
Staphylococcus aureus	BS EN ISO 6888-1:1999	cfu/g	<100	Annually
Yeasts	BS 21527-1:2008 Horizontal method of enumeration of yeasts and moulds	cfu/g	<100	Annually
Moulds	BS 21527-1:2008 Horizontal method of enumeration of yeasts and moulds	cfu/g	<100	Annually
Bacillus cereus	11.10 based on Practical Food Microbiology 3rd edition 2003	cfu/g	<1000	Annually

PACKAGING

PRIMARY PACKAGING

MATERIAL	Film laminate: 20 Matt OPP / 30 OPP Thickness: 52µm
CLOSURE & TAMPER EVIDENCE FEATURE	Heat sealed
CODING	Retail Unit Barcode Best before: DDMMYYYY / Line / Julian year & day / Time (eg 01.05.2022 N04 2123 13:24) (Also date of production for exports to UAE)


Product: Proper Corn Sweet Cinnamon

Version 1.0 06.02.2023

Ref: WN Spec 0148


90g PACK DIMENSIONS, WEIGHT OF FILM	280mm width x 310mm length, 7.8g
-------------------------------------	----------------------------------

SECONDARY PACKAGING

CASE MATERIAL	Cardboard 
CLOSURE & TAMPER EVIDENCE FEATURE MATERIAL & WEIGHT OF TAPE	Parcel Tape <2g
CODING DETAIL	Outer Case Barcode Best before: DDMMYYYY / Line / Julian year & day / Time (eg 01.05.2022 N04 2123 13:24) (+ date of production for exports to UAE)
OUTER DIMENSIONS WEIGHT OF CORRUGATED CARDBOARD	299mm W x 260mm L x 266mm H 260g

TERTIARY PACKAGING & PALLETISATION

Pallet (CHEP BLUE UK / Customer dependent for exports) wrapped in plastic wrap, pallet label applied.

TERTIARY COMPONENT	MATERIAL DETAILS
Pallet Wrap	LLDPE film, 166g per pallet 
Label/s	Self-adhesive paper, 5g per pallet

PACKS	PACKS PER CASE	CASES PER LAYER	HEIGHT (CASES)	CASES PER PALLET
90g	8	12	6	72

TRANSPORT & STORAGE

CONDITIONS REQUIRED	The transport of all manufactured goods should meet the product requirements: the storage should be in a dry/cool warehouse free from rodents, insects, contamination risks and should not be exposed to direct sunlight. All transport and storage facility should be pest/contamination free.
---------------------	---



PROPER

PRODUCT SPECIFICATION

DOCUMENT HISTORY

VERSION	DATE OF ISSUE	DETAILS OF AMENDMENTS	AUTHOR	APPROVED BY
1.0	24.11.2022	N/A	CH	JB

APPROVAL

Any alteration to the specification must be agreed in writing. Any specifications not signed and returned within 14 days of issue will be assumed as accepted by your company.

COMPANY (Customer)	SIGNATURE (can be added via comment)	NAME	POSTITION	DATE

Commented [SC1]: Can reply here as signature verification.