

St. Dalfour Superfruit Blueberry & Acai 6x170g

Blueberry & Acai 6x170g

PRODUCT DESCRIPTION

Blueberry & Acai Fruit Spread

Brand	Euro Food Brands
Manufacturer Product Code	EF371022
Product Type	Food
Product Category	Preserves and Spreads
Storage Type	Ambient
Erudus ID	05c7f21a108d45859d55d9c4063a9b0d
Specification Type	Generic
Inner Component GTIN	5014271005775
Outer Case GTIN	15014271005772



INGREDIENTS

Ingredient Declaration

Fruit 51% (Blueberries 46%, Acai 5%) (origin: EU & non-EU), Unsweetened Fruit Juice Concentrates (Grape, Date), Lemon Juice, Gelling Agent: Fruit Pectin.

ALLERGENS

Product Contains:			
Celery/Celeriac	No	Mustard	No
Cereals Containing Gluten	No	Nuts (Tree)	No
Barley	No	Almond nuts	No
Oats	No	Brazil nuts	No
Rye	No	Cashew nuts	No
Wheat (including Spelt and Khorasan)	No	Hazelnuts	No
Crustacea	No	Macadamia (Queensland) nuts	No
Eggs	No	Pecan nuts	No
Fish	No	Pistachio nuts	No
Lupin	No	Walnuts	No
Milk	No	Peanuts	No
Molluscs	No	Sesame Seeds	No
		Soybeans	No
		Sulphur Dioxide and Sulphites	No

SUPPLEMENTARY
INGREDIENT
INFORMATION

Palm Oil	No
Hydrogenated Vegetable Oil/Fat	No
GM Protein/DNA	No

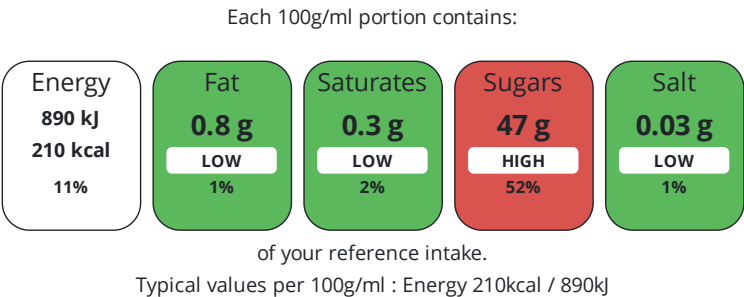
ADDITIVES

Product Contains:			
Artificial Antioxidants	No	Artificial Flavourings	No
Artificial Colours	No	Artificial Preservatives	No
Artificial Flavour Enhancers	No	Artificial Sweeteners	No

DIET
SUITABILITY

NUTRITIONAL
INFORMATION

Vegan Diet	Suitable for	Vegetarian Diet	Suitable for
Halal Diet	No	Kosher Diet	No



Nutrient	per 100g	RI per 100g
Energy (kJ)	890 kJ	11%
Energy (kcal)	210 kcal	11%
Fat	0.8 g	1%
of which Saturates	0.3 g	2%
Carbohydrate	50 g	19%
of which Sugars	47 g	52%
Fibre	1.3 g	
Protein	< 0.5 g	1%
Salt	0.03 g	1%

SUPPLEMENTARY
NUTRITIONAL
INFORMATION

HANDLING &
STORAGE
INFORMATION

Directions For Use	Use as desired.
Storage Instructions	Refrigerate after opening and consume within 2 months
Shelf Life from Time of Production	1095 Days

ACCREDITATIONS/
CERTIFICATIONS/
ASSURANCE
SCHEMES
ORIGIN

BRCGS Certified	
Product Country of Origin/Place of Provenance	France

PRODUCT
CHARACTERISTICS
CONFIGURATION

Standards Testing	
Case Configuration	Inner Pack Configuration
Total Quantity of Inner Components in Outer Case	6 Units

PRODUCT
WEIGHTS

Inner Component	
Variable Weight Consumer Item	No
Inner Component Weight	170 g
Outer Case	
Outer Case Gross Weight	2.01 kg
Outer Case Net Weight	1.02 kg

PRODUCT
DIMENSIONS

Inner Component	
Inner Component Depth	55 mm
Inner Component Width	55 mm
Inner Component Height	105 mm
Outer Case	
Outer Case Depth	175 mm
Outer Case Width	115 mm
Outer Case Height	105 mm

PALLET
INFORMATION

Quantity of Cases Per Pallet Layer	48 Cases	Pallet Height	1.1 MTR
Quantity of Layers Per Pallet	9 Layers	Pallet Gross Weight	870.73 kg
Quantity of Cases Per Pallet	432 Cases		

PACKAGING

Inner Component Packaging						
Type	Materials	Weight	Recycled Plastic %	Recyclable	Returnable	Composite
Jar	Paper/Cardboard	0.7 g	- %			
Jar	Glass	155 g	- %			
Jar	Steel	7.1 g	- %			
Outer Case Packaging						
Type	Materials	Weight	Recycled Plastic %	Recyclable	Returnable	Composite
Case	Paper/Cardboard	13 g	- %			
Case	Plastic	2 g	- %			

OTHER
INFORMATION

Commodity Code	20079939	Value Added Tax Rate	0%
----------------	----------	----------------------	----

CONTACT
INFORMATION

Address
Euro Food Brands
1-4 Kimbell Mews
Humphrey Lane, Boughton
Northampton
Northamptonshire
NN2 8XB
United Kingdom

P: (Phone) 01604821200

The information on the [Erudus System](#) has been supplied by the manufacturers of the products and, whilst the owners of the Erudus System take steps to ensure the information is regularly updated, they give no warranty and no guarantee that the information is accurate. Product information and ingredients may change, please always read product labels carefully in addition to using the information provided by Erudus.

We do not accept liability for any inaccuracies or incorrect information contained on this site.
Please visit <http://www.erudus.com/terms-and-conditions> for full terms and conditions.