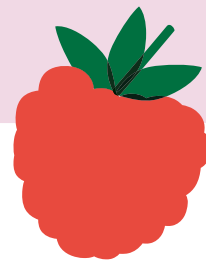


5 903 137 530998



# Ferment Fizz

## Lemon & Raspberry

### Lemonade

#### Nutritional Information (per 100ml)

Energy:	30 kcal / 128 kJ
Fat:	0 g
Saturated Fat:	0 g
Carbohydrates:	8.3 g
Sugars:	6 g
Fibre:	1.5 g
Protein:	0 g
Salt:	0.12 g

#### Ingredients:

Water, fermented lemon and raspberry-based drink 22% (NFC\* lemon juice 44.5%, lemons 27.5%, raspberries 27.5%, salt), beetroot sugar, prebiotic fibre (inulin), carbon dioxide.

\* NFC = Not From Concentrate

#### Warnings / Instructions:

Natural sediment – shake gently before use. Store at room temperature. Best served chilled. Once opened, keep refrigerated and consume within 24h.