

Gluten Free All Purpose Flour 500g x 6

Gluten Free All Purpose Flour 6x500g

PRODUCT DESCRIPTION

Our unique flour blend, Free From the 14 major allergens (including Gluten, Dairy, Nuts, Peanuts, Soya and Sesame), is also made without buckwheat, to help consumers with sensitivities to this major ingredients that sits outside the 'Top 14 allergens'.

Brand	Creative Nature Ltd
Manufacturer Product Code	CN-FLOURALLPURPOSE500G
Product Type	Food
Product Category	Baking Mixes and Bakery Ingredients
Storage Type	Ambient
Erudus ID	5f87e76dae6340aa99fa85766f45090a
Specification Type	Legacy

Outer Case GTIN

5060113086754



INGREDIENTS

Ingredient Declaration
Brown Rice Flour, White Rice Flour, Maize Starch, Tapioca Starch, Maize Flour

ALLERGENS

Product Contains:			
Celery/Celeriac	No	Mustard	No
Cereals Containing Gluten	No	Nuts (Tree)	No
Barley	No	Almond nuts	No
Oats	No	Brazil nuts	No
Rye	No	Cashew nuts	No
Wheat (including Spelt and Khorasan)	No	Hazelnuts	No
Gluten content <20ppm	Yes	Macadamia (Queensland) nuts	No
Crustacea	No	Pecan nuts	No
Eggs	No	Pistachio nuts	No
Fish	No	Walnuts	No
Lupin	No	Peanuts	No
Milk	No	Sesame Seeds	No
Molluscs	No	Soybeans	No
		Sulphur Dioxide and Sulphites	No

Additional Allergen Information
Free From 14 Most Common Allergens and no 'may contain' warnings

SUPPLEMENTARY
INGREDIENT
INFORMATION

Palm Oil	No
Hydrogenated Vegetable Oil/Fat	No
GM Protein/DNA	No

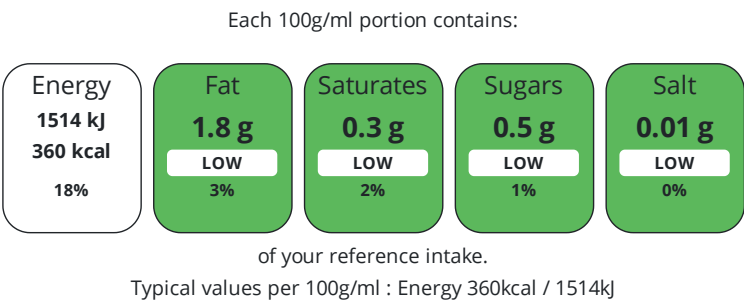
ADDITIVES

Product Contains:			
Artificial Antioxidants	No	Artificial Flavourings	No
Artificial Colours	No	Artificial Preservatives	No
Artificial Flavour Enhancers	No	Artificial Sweeteners	No

DIET
SUITABILITY

Suitable for Coeliacs	Yes	Halal Diet	No
Kosher Diet	Suitable for	Vegetarian Diet	Suitable for
Vegan Diet	Suitable for		

NUTRITIONAL
INFORMATION



Nutrient	per 100g/ml	RI per 100g/ml
Energy (kJ)	1514 kJ	18%
Energy (kcal)	360 kcal	18%
Fat	1.8 g	3%
of which Saturates	0.3 g	2%
Carbohydrate	81 g	31%
of which Sugars	0.5 g	1%
Fibre	3 g	
Protein	5.3 g	11%
Salt	< 0.01 g	0%

SUPPLEMENTARY
NUTRITIONAL
INFORMATION

HANDLING &
STORAGE
INFORMATION

Directions For Use	Use me in any of your home bakes!
Storage Instructions	keep in a cool, dry place
Shelf Life from Time of Production	365 Days

ACCREDITATIONS/
CERTIFICATIONS/
ASSURANCE
SCHEMES



ORIGIN

Product Country of Origin/Place of Provenance	United Kingdom
---	----------------

PRODUCT
CHARACTERISTICS

Standards Testing			
Do you undertake trend analysis of microbiological results?	Yes	Is shelf life testing undertaken?	No

CONFIGURATION

Case Configuration	Inner Pack Configuration
Total Quantity of Inner Components in Outer Case	6 Units
Is the Outer Case Splittable?	Yes

PRODUCT WEIGHTS	Inner Component							
	Variable Weight Consumer Item		No					
	Inner Component Weight		500 g					
	Outer Case							
	Outer Case Gross Weight		3.23 kg					
	Outer Case Net Weight		3 kg					
PRODUCT DIMENSIONS	Inner Component							
	Inner Component Depth		185 mm					
	Inner Component Width		230 mm					
	Inner Component Height		70 mm					
	Outer Case							
	Outer Case Depth		240 mm					
PALLET INFORMATION	Outer Case Width		200 mm					
	Outer Case Height		260 mm					
	Quantity of Cases Per Pallet Layer		26 Cases		Pallet Height		2.02 MTR	
	Quantity of Layers Per Pallet		7 Layers		Pallet Gross Weight		607.5 kg	
	Quantity of Cases Per Pallet		182 Cases					
	PACKAGING	Inner Component Packaging						
Type		Materials	Weight	Recycled Plastic %	Recyclable	Returnable	Composite	
Poly Treated PET/PE		Plastic	13 g	- %				
Outer Case Packaging								
Type		Materials	Weight	Recycled Plastic %	Recyclable	Returnable	Composite	
Case		Paper/Cardboard	150 g	- %				
OTHER INFORMATION	Commodity Code		19012000					
	Address							
CONTACT INFORMATION	Creative Nature Ltd							
	36 Central Avenue							
	West Molesey							
	Surrey							
	KT8 2QZ							
	England							
P: (Phone) 02089790903								
Complaints Contact				Commercial Contact				
Creative Nature Superfoods Team				Trudi Austin				
Customer Service				Head Of Sales - Creative Nature Superfoods Ltd				
orders@creative-nature.uk.com				trudi@creative-nature.uk.com				
P: (Phone) (+44) 0208 979 0903				P: (Phone) 07982 634646				

The information on the [Erudus System](#) has been supplied by the manufacturers of the products and, whilst the owners of the Erudus System take steps to ensure the information is regularly updated, they give no warranty and no guarantee that the information is accurate. Product information and ingredients may change, please always read product labels carefully in addition to using the information provided by Erudus.

