



## Finished Goods Specification

---

### Sections

1. Finished Goods Overview
2. Labelling
3. Nutritional Information
4. Pallet Plan
5. GS1 Barcodes
6. Suitability
7. Logos
8. Process Information
9. Packaging Image
10. Revision History
11. Approvals

## 1. Finished Goods Overview

Item Number	80301
Brand	Dorset
Product Type	Breakfast Cereals
Category	Muesli
Variant	Berries & Cherries
Pack Weight (g)	600 g e
Carton Code	YN01IG03
Packaging Description	Packed into film then cardboard cartons, then into outer cases, 5 per case.

## 2. Labelling

Legal Descriptor	A blend of rolled and toasted flakes with raisins and freeze dried berries and cherries.
On Pack Ingredient Declaration Including Allergens	<p>ingredients:  Dried fruit and seeds (33%) [sultanas, raisins, sunflower seeds, freeze dried sliced cherries (2%), freeze dried redcurrants (1%), freeze dried blueberries (0.5%), freeze dried blackcurrants (0.5%)], flavoured barley flakes (<b>barley</b> flakes, maize starch, carrot and blackcurrant concentrate, natural flavouring), <b>barley</b> flakes, wholegrain <b>oat</b> flakes, wholegrain toasted <b>wheat</b> flakes, wholegrain <b>wheat</b> flakes.</p> <p>Allergy Advice: For allergens, including cereals containing gluten, see ingredients in <b>Bold</b>.</p> <p>May Also Contain: Other Gluten Sources, Nuts.</p>
Storage Information	Once opened, roll inner bag down tightly and store in a cool, dry place.
Shelf Life (days)	395
Best Before Date Format	dd mm yyyy
Traceability Coding	Julian, Line, Time e.g. (5212 E 10:15)

The allergens listed above are based on the 14 EU allergens. If products are being sold internationally, please contact us for further allergen information.

## 3. Nutritional Information

Nutrient	Per 100g	Per Portion	% RI* Per Portion
Energy kJ	1530 kJ	688 kJ	8 %
Energy kcal	363 kcal	163 kcal	
Fat	5.5 g	2.5 g	4 %
Saturates	0.8 g	0.4 g	2 %
Carbohydrate	64.1 g	28.8 g	11 %
Sugar	17.5 g	7.9 g	9 %
Fibre	9.2 g	4.1 g	
Protein	9.6 g	4.3 g	9 %

Salt	0.03 g	0.01 g	<1 %
*Reference Intake of an average adult (8400kJ / 2000kcal)			
Serving size	45 g		
Servings per pack	Approximately 13 portions per pack		

#### 4. Pallet Plan

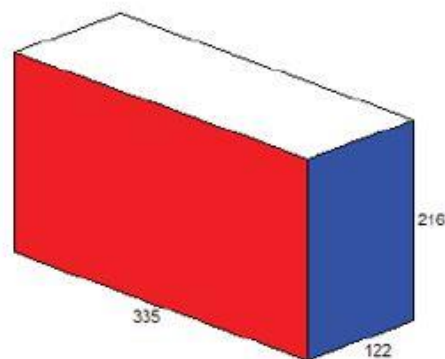
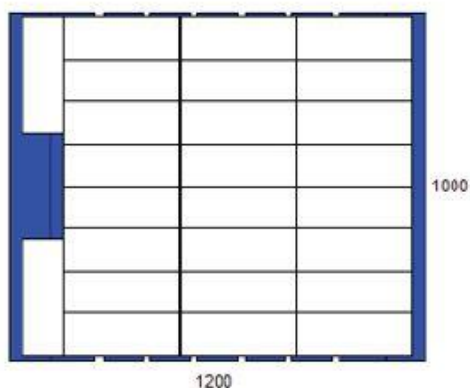
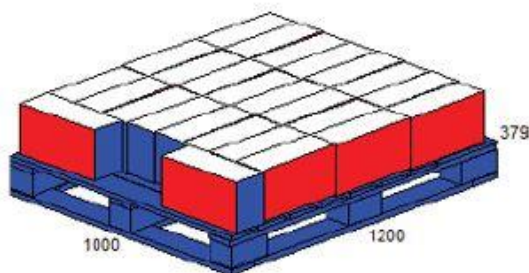
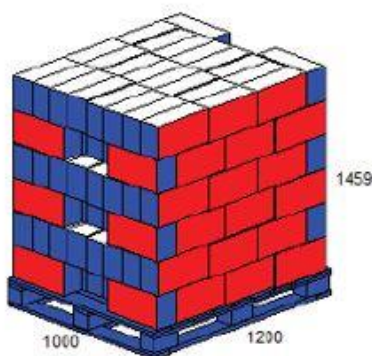
The weights in the below pallet plan are generic weights for this particular pallet plan and should only be used for guidance only.

15 November 2019

Product Name YN UK  
Product Code RY0501  
Datafile Name yn uk 6layers (13/06/2019)  
Load Ref. 1 I (Edited)  
Cube Used 77.2 %  
Area Used 88.6 %  
Pallet type chepblue

26 Case / Layer  
6 Layer / Load  
156 Case / Load

	Length	Width	Height	Net	Gross
Case (OD)	335.0	122.0	216.0 mm	2.750	2.960 Kg
Product	1127.0	976.0	1296.0 mm	429.000	461.760 Kg
Load	1200.0	1000.0	1459.0 mm	461.760	491.760 Kg



#### 5. GS1 Barcodes

Consumer Unit		Traded Unit	
Barcode Number	5018357012572	Barcode Number	15018357016560

#### 6. Suitability

This product does not contain genetically modified organisms (GMO)
Suitable for vegans

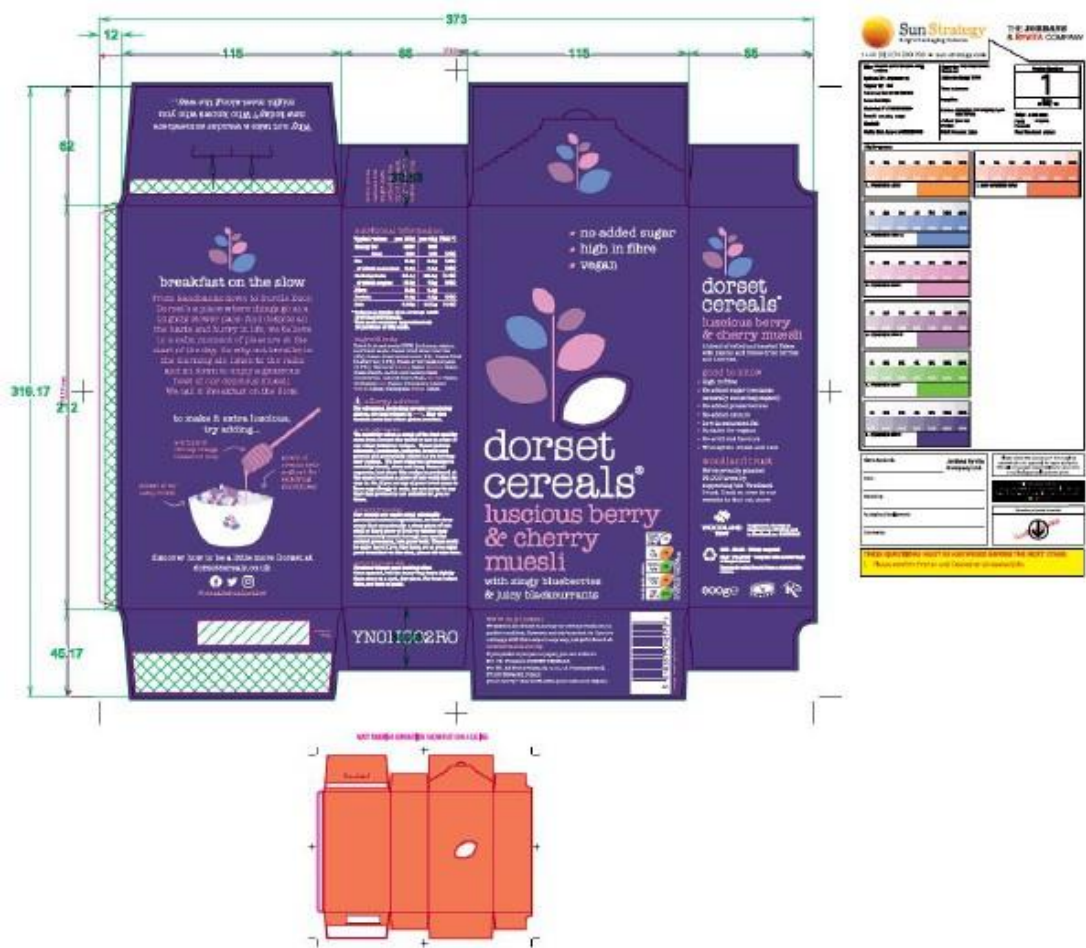
#### 7. Logos

Woodland Trust
Vegetarian Society Approved
Kosher (KLBD)
Recycle
Facebook
Twitter
Instagram

8. Process Information

All ingredients are subject to a sampling and testing regime upon intake. Ingredients are scanned then decanted into a blender and mixed for the required amount of time. The blended recipe is put over the weigher heads and is gravity fed to a form and seal machine. The packs are passed through an x-ray. Sensitivities are 5mm glass, 2mm stainless steel, 2mm non-ferrous, 2mm ferrous. The finished product is packed in to the outer case, which are then stacked on a pallet. When the pallet is full it is covered with a plastic top sheet, wrapped with shrink wrap, labelled and scanned. The wrapped pallets are then stored at room temperature.


9. Packaging Image



10. Revision History

SKU Code Version	Reason
4	Updated the pack code from YN01IG02 to YN01IG03
4	Woodland Trust logo removed from artwork
4	May contains changed from Other Gluten Sources, Nuts to Nuts, Other cereals containing gluten.
4	Distributor Spec updated

## 11. Approvals

Department	Approved	Approved by	Date
Compliance	Yes	Eloise Boyd 	12/08/2022