

Illy Brazil Cerrado Mineiro Ground 6 x 250g

Brazil Cerrado Mineiro Ground 6x386g

PRODUCT DESCRIPTION

Illy Brazil Cerrado Mineiro Ground Coffee

Brand	Euro Food Brands Limited
Manufacturer Product Code	EFA181
Product Type	Drink
Product Category	Tea & Coffee
Storage Type	Ambient
Erudus ID	8a6c3480d15d4d14b7047d817e4fa711
Specification Type	Drinks

Inner Component GTIN	8003753215006
Manufacturer Component Code	9012100
Outer Case GTIN	08003753233659



INGREDIENTS

Ingredient Declaration

100% Arabica coffee

ALLERGENS

Product Contains:

Celery/Celeriac	No
Cereals Containing Gluten	No
Barley	No
Oats	No
Rye	No
Wheat (including Spelt and Khorasan)	No
Crustacea	No
Eggs	No
Fish	No
Lupin	No
Milk	No
Molluscs	No

Mustard	No
Nuts (Tree)	No
Almond nuts	No
Brazil nuts	No
Cashew nuts	No
Hazelnuts	No
Macadamia (Queensland) nuts	No
Pecan nuts	No
Pistachio nuts	No
Walnuts	No
Peanuts	No
Sesame Seeds	No
Soybeans	No
Sulphur Dioxide and Sulphites	No

Additional Allergen Information

n/a

SUPPLEMENTARY
INGREDIENT
INFORMATION

Palm Oil	No
Hydrogenated Vegetable Oil/Fat	No
GM Protein/DNA	No

ADDITIVES

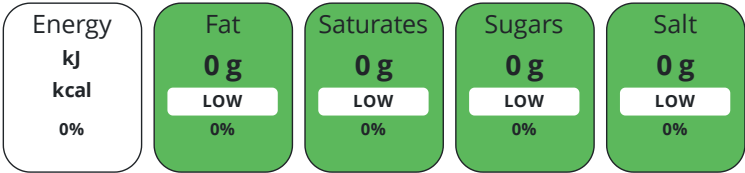
Product Contains:

Artificial Antioxidants	No	Artificial Flavourings	No
Artificial Colours	No	Artificial Preservatives	No
Artificial Flavour Enhancers	No	Artificial Sweeteners	No
Vegan Diet	Suitable for	Vegetarian Diet	Suitable for
Halal Diet	No	Kosher Diet	No

DIET
SUITABILITY

NUTRITIONAL
INFORMATION AS
SOLD

Each 100g/ml portion contains:



of your reference intake.

Typical values per 100g/ml : Energy kcal / kJ

Nutrient	per 100g	RI per 100g
Energy (kJ)	0 kJ	
Energy (kcal)	0 kcal	
Fat	0 g	
of which Saturates	0 g	
Carbohydrate	0 g	
of which Sugars	0 g	
Protein	0 g	
Salt	0 g	

SUPPLEMENTARY
NUTRITIONAL
INFORMATION

HANDLING &
STORAGE
INFORMATION

Directions For Use

n/a

Storage Instructions

n/a

Shelf Life from Time of Production	365 Days
------------------------------------	----------

ORIGIN

Product Country of Origin	United Kingdom
Origin of the Primary Ingredient	

PRODUCT
CHARACTERISTICS

Standards Testing		
Do you undertake trend analysis of microbiological results?	Yes	Is shelf life testing undertaken? Yes

CONFIGURATION

Case Configuration	Inner Pack Configuration
Variable Inner Components in Outer Case	No
Total Quantity of Inner Components in Outer Case	6 Units
Is the Outer Case Splittable?	No

PRODUCT WEIGHTS	Inner Component						
	Inner Component Weight		386 g				
	e mark		Yes				
	Outer Case						
	Outer Case Gross Weight		2.57 kg				
	Outer Case Net Weight		2.32 kg				
PRODUCT DIMENSIONS	Inner Component						
	Inner Component Depth		91.2 mm				
	Inner Component Width		91.2 mm				
	Inner Component Height		143 mm				
	Outer Case						
	Outer Case Depth		238 mm				
PALLET INFORMATION	Outer Case Width		327 mm				
	Outer Case Height		151 mm				
	Quantity of Cases Per Pallet Layer		12 Cases		Pallet Type		UK Standard Pallet
	Quantity of Layers Per Pallet		13 Layers		Pallet Height		2.13 MTR
	Quantity of Cases Per Pallet		156 Cases		Pallet Gross Weight		401 kg
PACKAGING	Inner Component Packaging						
	Type	Materials	Weight	Recycled Plastic %	Recyclable	Returnable	Composite
	Tin	Steel	136 g	- %			
	Outer Case Packaging						
	Type	Materials	Weight	Recycled Plastic %	Recyclable	Returnable	Composite
	Case	Paper/Cardboard / Cardboard	255 g	- %			
SAFETY & WARNINGS							
OTHER INFORMATION	Commodity Code		09012100				
CONTACT INFORMATION	Address						
	Euro Food Brands Limited						
	1-4 Kimbell Mews						
	Humfrey Lane, Boughton						
	Northampton						
	Northamptonshire						
	NN2 8XB						
	United Kingdom						
P: (Phone) 01604821200							

The information on the [Erudus System](#) has been supplied by the manufacturers of the products and, whilst the owners of the Erudus System take steps to ensure the information is regularly updated, they give no warranty and no guarantee that the information is accurate. Product information and ingredients may change, please always read product labels carefully in addition to using the information provided by Erudus.

We do not accept liability for any inaccuracies or incorrect information contained on this site.
Please visit <http://www.erudus.com/terms-and-conditions> for full terms and conditions.