

Delightfully Crumbly Corn Bread Baking Mix

315g x 6

Delightfully Crumbly Corn Bread Baking Mix 6x315g

PRODUCT DESCRIPTION

An American classic that's also Free From the 14 major allergens (including Gluten, Dairy, Nuts, Peanuts, Soya and Sesame)! This versatile mix can be made savoury (as a side dish) or sweet (as a dessert), is Kosher certified, Vegan and allergy-safe. Not just for Thanksgiving, our cornbread mix can be enjoyed year-round.

Brand	Creative Nature Ltd
Manufacturer Product Code	CN-MIXCORN315G
Product Type	Food
Product Category	Baking Mixes and Bakery Ingredients
Storage Type	Ambient
Erudus ID	87562f07923c4b658584fcd6a0243b36
Specification Type	Legacy



Outer Case GTIN5060113086884



INGREDIENTS

Ingredient Declaration

Yellow Cornmeal, Flour Blend (Brown Rice, White Rice, Maize Starch, Tapioca Starch, Maize), Raw Cane Sugar, Baking Powder (Mono Calcium Phosphate, Corn Starch, Raising Agent: Sodium Bicarbonates), Crystal Salt.

ALLERGENS

Product Contains:

Celery/Celeriac	No	Mustard	No
Cereals Containing Gluten	No	Nuts (Tree)	No
Barley	No	Almond nuts	No
Oats	No	Brazil nuts	No
Rye	No	Cashew nuts	No
Wheat (including Spelt and Khorasan)	No	Hazelnuts	No
Gluten content <20ppm	Yes	Macadamia (Queensland) nuts	No
Crustacea	No	Pecan nuts	No
Eggs	No	Pistachio nuts	No
Fish	No	Walnuts	No
Lupin	No	Peanuts	No
Milk	No	Sesame Seeds	No
Molluscs	No	Soybeans	No
		Sulphur Dioxide and Sulphites	No

Additional Allergen Information

Free From 14 Most Common Allergens and no 'may contain' warnings

SUPPLEMENTARY
INGREDIENT
INFORMATION

Palm Oil	No
Hydrogenated Vegetable Oil/Fat	No
GM Protein/DNA	No

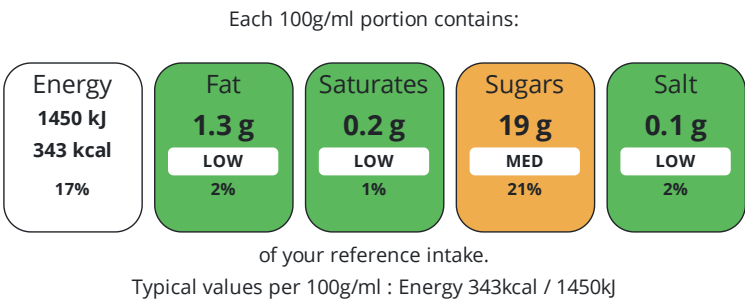
ADDITIVES

Product Contains:			
Artificial Antioxidants	No	Artificial Flavourings	No
Artificial Colours	No	Artificial Preservatives	No
Artificial Flavour Enhancers	No	Artificial Sweeteners	No

DIET
SUITABILITY

Suitable for Coeliacs	Yes	Halal Diet	No
Kosher Diet	Suitable for	Vegetarian Diet	Suitable for
Vegan Diet	Suitable for		

NUTRITIONAL
INFORMATION



Nutrient	per 100g/ml	RI per 100g/ml
Energy (kJ)	1450 kJ	17%
Energy (kcal)	343 kcal	17%
Fat	1.3 g	2%
of which Saturates	0.2 g	1%
Carbohydrate	79 g	30%
of which Sugars	19 g	21%
Fibre	2.1 g	
Protein	3.7 g	7%
Salt	0.1 g	2%

SUPPLEMENTARY
NUTRITIONAL
INFORMATION

HANDLING &
STORAGE
INFORMATION

Directions For Use

VEGAN RECIPE • 50ml Vegetable Oil • 200ml Plant Milk • 80g Apple Sauce STANDARD RECIPE • 2 Large Eggs • 200ml Milk HOW TO MAKE • Grease a 1lb loaf tin or 20cm cake tin with Butter/Oil and leave a teaspoon more in the bottom of the tin for good measure! Turn the oven to 200c and pop the tin in to get good and toasty. • Pour this packet into your favourite mixing bowl and give it a quick whisk to remove any annoying lumps. • Make a little well in the middle, then carefully add the rest of the ingredients. Give it all a good stir, but don't over mix, or it will be a tad dense! • Using oven gloves, take the tin out of the oven and lovingly spoon the mixture in. • Pop the tin back in the oven and let it cook for around 25 minutes, until golden on top. • Using your oven gloves again, remove the piping hot tin and leave to cool slightly. OUR EXPERT ADVICE: • Heating the tin before adding the batter gives you a crispy bottom, if you prefer it less crispy, then skip that bit! • For a fluffier bread, use buttermilk instead of milk or add 2 tablespoons lemon juice or apple cider vinegar to you milk for a homemade buttermilk! • Got a sweet tooth? Add 2 tablespoons maple syrup to sweeten the deal, or spread some maple butter on top when it's still piping hot from the oven!

Storage Instructions

keep in a cool, dry place

Shelf Life from Time of Production	540 Days
------------------------------------	----------



ORIGIN	Product Country of Origin/Place of Provenance		United Kingdom				
PRODUCT CHARACTERISTICS	Standards Testing						
	Do you undertake trend analysis of microbiological results?		Yes		Is shelf life testing undertaken?		No
CONFIGURATION	Case Configuration				Inner Pack Configuration		
	Total Quantity of Inner Components in Outer Case		6 Units				
	Is the Outer Case Splittable?		Yes				
PRODUCT WEIGHTS	Inner Component						
	Variable Weight Consumer Item		No				
	Inner Component Weight		315 g				
PRODUCT DIMENSIONS	Outer Case						
	Outer Case Gross Weight		2.05 kg				
	Outer Case Net Weight		1.89 kg				
	Inner Component						
	Inner Component Depth		145 mm				
PALLET INFORMATION	Inner Component Width		190 mm				
	Inner Component Height		70 mm				
	Outer Case						
	Outer Case Depth		245 mm				
	Outer Case Width		150 mm				
	Outer Case Height		190 mm				
	Quantity of Cases Per Pallet Layer		32 Cases		Pallet Height		1.53 MTR
Quantity of Layers Per Pallet		7 Layers		Pallet Gross Weight		480.1 kg	
PACKAGING	Quantity of Cases Per Pallet		224 Cases				
	Inner Component Packaging						
	Type	Materials	Weight	Recycled Plastic %	Recyclable	Returnable	Composite
	Poly Treated PET/PE	Plastic	9 g	- %			
	Outer Case Packaging						
	Type	Materials	Weight	Recycled Plastic %	Recyclable	Returnable	Composite
	Case	Paper/Cardboard	110 g	- %			
	OTHER INFORMATION	Commodity Code		19012000			

CONTACT
INFORMATION

Address
Creative Nature Ltd
36 Central Avenue
West Molesey
Surrey
KT8 2QZ
England

P: (Phone) 02089790903

Complaints Contact
Creative Nature Superfoods Team
Customer Service
orders@creative-nature.uk.com

P: (Phone) (+44) 0208 979 0903

Commercial Contact
Trudi Austin
Head Of Sales - Creative Nature Superfoods Ltd
trudi@creative-nature.uk.com

P: (Phone) 07982 634646

The information on the [Erudus System](#) has been supplied by the manufacturers of the products and, whilst the owners of the Erudus System take steps to ensure the information is regularly updated, they give no warranty and no guarantee that the information is accurate. Product information and ingredients may change, please always read product labels carefully in addition to using the information provided by Erudus.

We do not accept liability for any inaccuracies or incorrect information contained on this site.
Please visit <http://www.erudus.com/terms-and-conditions> for full terms and conditions.