

# Yogi Tea® Morning Energy Organic 6x17

Morning Energy Organic 6x34g

PRODUCT DESCRIPTION

Ayurvedic blend with roasted mate, green coffee beans, maca.

Brand	Euro Food Brands
Manufacturer Product Code	483804
Effective Date	Mar 1, 2024
Product Type	Drink
Product Category	Tea & Coffee
Storage Type	Ambient
Erudus ID	247cbcceb1204867bb715813e706cb4d
Specification Type	Drinks

Inner Component GTIN	4012824406391
Outer Case GTIN	4012824436398



INGREDIENTS

Ingredient Declaration

Roasted Mate\* (17%), Green Mate\* (15%), Turmeric Root\*, Green Coffee Beans\* (10%), Green Rooibos\*, Sencha\* (10%), Roasted Dandelion Root\*, Liquorice\*, Maca\* (5%), Spearmint\*, Carob\*.

\*certified organic

ALLERGENS

Product Contains:

Celery/Celeriac	No
Cereals Containing Gluten	No
Barley	No
Oats	No
Rye	No
Wheat (including Spelt and Khorasan)	No
Crustacea	No
Eggs	No
Fish	No
Lupin	No
Milk	No
Molluscs	No

Mustard	No
Nuts (Tree)	No
Almond nuts	No
Brazil nuts	No
Cashew nuts	No
Hazelnuts	No
Macadamia (Queensland) nuts	No
Pecan nuts	No
Pistachio nuts	No
Walnuts	No
Peanuts	No
Sesame Seeds	No
Soybeans	No
Sulphur Dioxide and Sulphites	No

SUPPLEMENTARY  
INGREDIENT  
INFORMATION

Palm Oil	No
Hydrogenated Vegetable Oil/Fat	No
GM Protein/DNA	No

ADDITIVES

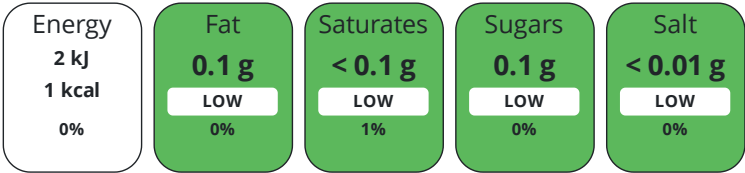
Product Contains:

Artificial Antioxidants	No	Artificial Flavourings	No
Artificial Colours	No	Artificial Preservatives	No
Artificial Flavour Enhancers	No	Artificial Sweeteners	No
Vegan Diet	Suitable for	Vegetarian Diet	Suitable for
Halal Diet	No	Kosher Diet	No

DIET  
SUITABILITY

NUTRITIONAL  
INFORMATION

Each 100g/ml portion contains:



of your reference intake.

Typical values per 100g/ml : Energy 1kcal / 2kJ

Nutrient	per 100g	RI per 100g	per 100g serving	RI per 100g serving
Energy (kJ)	2 kJ	0%	2 kJ	0%
Energy (kcal)	0.5 kcal	0%	0.5 kcal	0%
Fat	0.1 g	0%	0.1 g	0%
of which Saturates	< 0.1 g	1%	0.1 g	1%
Carbohydrate	0.1 g	0%	0.1 g	0%
of which Sugars	0.1 g	0%	0.1 g	0%
Protein	0.1 g	0%	0.1 g	0%
Salt	< 0.01 g	0%	-	
Sodium	< 0.01 mg		-	
Serving Size	100 g			

SUPPLEMENTARY  
NUTRITIONAL  
INFORMATION

HANDLING &  
STORAGE  
INFORMATION

Directions For Use

Pour 250 ml of freshly boiled water (100 °C) over the teabag. Allow to infuse for 5 minutes.

Storage Instructions

Store in dry environment (max. 20 °C, 60 % rel. humidity)

Shelf Life from Time of Production	1080 Days
------------------------------------	-----------

ACCREDITATIONS/  
CERTIFICATIONS/  
ASSURANCE  
SCHEMES  
ORIGIN

IFS Food Standard	BRCGS Certified
Other Accreditation	
Product Country of Origin/Place of Provenance	Italy
Additional Origin Details	No other.

PRODUCT  
CHARACTERISTICS

Standards Testing		
Do you undertake trend analysis of microbiological results?	Yes	Is shelf life testing undertaken? Yes

CONFIGURATION	Case Configuration		Inner Pack Configuration				
PRODUCT WEIGHTS	Total Quantity of Inner Components in Outer Case		6 Units				
	Inner Component						
	Inner Component Weight		34 g				
	Outer Case						
	Outer Case Gross Weight		0.46 kg				
PRODUCT DIMENSIONS	Outer Case Net Weight		0.2 kg				
	Inner Component						
	Inner Component Depth		65 mm				
	Inner Component Width		75 mm				
	Inner Component Height		120 mm				
PALLET INFORMATION	Outer Case						
	Outer Case Depth		391 mm				
	Outer Case Width		78 mm				
	Outer Case Height		123 mm				
	Quantity of Cases Per Pallet Layer		36 Cases		Pallet Height		1.02 MTR
PACKAGING	Quantity of Layers Per Pallet		7 Layers		Pallet Gross Weight		114.9 kg
	Quantity of Cases Per Pallet		252 Cases				
	Inner Component Packaging						
	Type	Materials	Weight	Recycled Plastic %	Recyclable	Returnable	Composite
	Box	Plastic	4.79 g	- %			
	Box	Paper/Cardboard	26.03 g	- %			
	Outer Case Packaging						
	Type	Materials	Weight	Recycled Plastic %	Recyclable	Returnable	Composite
	Case	Paper/Cardboard	67.09 g	- %			
OTHER INFORMATION	Commodity Code		21069098				
CONTACT INFORMATION	Address						
	Euro Food Brands						
	1-4 Kimbell Mews						
	Humfrey Lane, Boughton						
	Northampton						
Northamptonshire							
NN2 8XB							
United Kingdom							
P: (Phone) 01604821200							

The information on the [Erudus System](#) has been supplied by the manufacturers of the products and, whilst the owners of the Erudus System take steps to ensure the information is regularly updated, they give no warranty and no guarantee that the information is accurate. Product information and ingredients may change, please always read product labels carefully in addition to using the information provided by Erudus.

We do not accept liability for any inaccuracies or incorrect information contained on this site.  
Please visit <http://www.erudus.com/terms-and-conditions> for full terms and conditions.