

Creamy Truffle

Creamy Truffle 1x150g

PRODUCT DESCRIPTION

Vegan cream cheese made with cashews and truffle oil.



Brand	Tyne Cheese Limited
Manufacturer Product Code	17
Manufacturer Version	1
Number	
Product Type	Food
Product Category	Vegan Cheese and Dairy Substitutes
Storage Type	Frozen
Erudus ID	7ccff9482ca64fc79454e0a3cb9ef3ff
Specification Type	Alternatives (Vegetarian and Vegan)

Manufacturer Component Code

17

CELERY FREE

CRUSTACEA FREE

EGG FREE

FISH FREE

LACTOSE FREE

LUPIN FREE

MILK FREE

MOLLUSC FREE

OAT FREE

PEANUT FREE

RYE FREE

SESAME FREE

VERY LOW GLUTEN

JNL Suitable for

K Suitable for

V Suitable for

V Suitable for











INGREDIENTS

Ingredient Declaration
Cashew Nuts, Water, Olive Oil, White Truffle, Himalayan Pink Salt, Probiotics.

ALLERGENS

Product Contains:

Celery/Celeriac	No
Cereals Containing Gluten	May Contain
Barley	May Contain
Oats	No
Rye	No
Wheat (including Spelt and Khorasan)	No
Crustacea	No
Eggs	No
Fish	No
Lupin	No
Milk	No
Molluscs	No

Risk Source:

Cereals Containing Gluten (Risk Source)	Factory
Mustard (Risk Source)	Factory
Sulphur Dioxide and Sulphites (Risk Source)	Factory

Mustard	May Contain
Nuts (Tree)	Yes
Almond nuts	No
Brazil nuts	No
Cashew nuts	Yes
Hazelnuts	No
Macadamia (Queensland) nuts	No
Pecan nuts	No
Pistachio nuts	No
Walnuts	No
Peanuts	No
Sesame Seeds	No
Soybeans	May Contain
Sulphur Dioxide and Sulphites	May Contain

Barley (Risk Source)	Factory
Soybeans (Risk Source)	Factory

FREE FROM CLAIMS

Free From Celery/Celeriac	Yes	Free From Oats	Yes
Free From Crustacea	Yes	Free From Peanuts	Yes
Free From Eggs	Yes	Free From Rye	Yes
Free From Fish	Yes	Free From Sesame	Yes
Free From Lactose	Yes	Very Low Gluten	Yes
Free From Lupin	Yes		
Free From Milk	Yes		
Free From Molluscs	Yes		

SUPPLEMENTARY INGREDIENT INFORMATION

Palm Oil	No
Hydrogenated Vegetable Oil/Fat	No
GM Protein/DNA	No

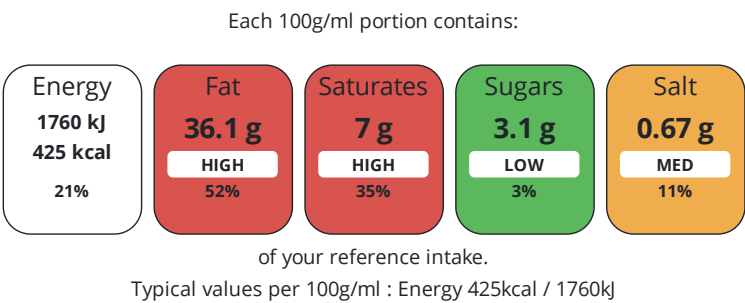
ADDITIVES

Product Contains:			
Artificial Antioxidants	No	Artificial Flavourings	No
Artificial Colours	No	Artificial Preservatives	No
Artificial Flavour Enhancers	No	Artificial Sweeteners	No

DIET SUITABILITY

Vegan Diet	Suitable for	Vegetarian Diet	Suitable for
Halal Diet	Suitable for	Kosher Diet	Suitable for

NUTRITIONAL INFORMATION



Nutrient	per 100g	RI per 100g
Energy (kJ)	1760 kJ	21%
Energy (kcal)	425 kcal	21%
Fat	36.1 g	52%
of which Saturates	7 g	35%
Carbohydrate	12.4 g	5%
of which Sugars	3.1 g	3%
Fibre	2.3 g	
Protein	12.7 g	25%
Salt	0.67 g	11%

Source of Nutritional Information	Calculation based on known values of ingredients
-----------------------------------	--

SUPPLEMENTARY NUTRITIONAL INFORMATION

HANDLING &
STORAGE
INFORMATION

Directions For Use

Use within 5 days of opening.

Storage Instructions

Keep frozen until opening.

Storage Instructions After Opening

Keep refrigerated after opening.

Shelf Life from Time of Production	90 Days
Shelf Life From Opening	5 Days
Shelf Life Once Defrosted	5 Days

ORIGIN

Product Country of Origin/Place of ProvenanceUnited Kingdom

Additional Origin Details

Cashew nuts sourced from Vietnam.

PRODUCT
CHARACTERISTICS

Standards Testing			
Do you undertake trend analysis of microbiological results?	Yes	Is shelf life testing undertaken?	Yes
		Commercially Sterile	No

HAZARD CONTROLS

Metal Detection	Yes	Optical Sorting	Yes
-----------------	-----	-----------------	-----

CONFIGURATION

Case Configuration		Inner Pack Configuration
Total Quantity of Inner Components in Outer Case	1 Units	

PRODUCT
WEIGHTS

Inner Component	
Variable Weight Consumer Item	No
Inner Component Weight	150 g
Outer Case	
Outer Case Gross Weight	0.3 kg
Outer Case Net Weight	0.15 kg

PRODUCT
DIMENSIONS

Inner Component	
Inner Component Depth	60 mm
Inner Component Width	60 mm
Inner Component Height	70 mm
Outer Case	
Outer Case Depth	70 mm
Outer Case Width	70 mm
Outer Case Height	90 mm

PALLET
INFORMATION

Non Palletised	Yes
----------------	-----

MARKETING
INFORMATION

Marketing Description

Luxuriously smooth and deeply flavourful, our creamy truffle is a true indulgence. Made with high-quality cashew nuts and infused with aromatic white truffle, it delivers a rich, earthy depth with every bite. Perfect for adding a touch of decadence to your favourite dishes.

OTHER
INFORMATION

Value Added Tax Rate	0%
----------------------	----

CONTACT
INFORMATION

Address

Tyne Cheese Limited
Unit C22 Tromso Close
Tyne Tunnel Trading Estate
North Shields
Tyne and Wear
NE297XH
United Kingdom

P: (Phone) 01670704993

The information on the [Erudus System](#) has been supplied by the manufacturers of the products and, whilst the owners of the Erudus System take steps to ensure the information is regularly updated, they give no warranty and no guarantee that the information is accurate. Product information and ingredients may change, please always read product labels carefully in addition to using the information provided by Erudus.

We do not accept liability for any inaccuracies or incorrect information contained on this site.
Please visit <http://www.erudus.com/terms-and-conditions> for full terms and conditions.