



## Finished Goods Specification

---

### Sections

1. Finished Goods Overview
2. Labelling
3. Nutritional Information
4. Pallet Plan
5. GS1 Barcodes
6. Suitability
7. Logos
8. Process Information
9. Packaging Image
10. Revision History
11. Approvals

## 1. Finished Goods Overview

Item Number	80476
Brand	Dorset
Product Type	Breakfast Cereals
Category	Granola
Variant	Nutty
Pack Weight (g)	450 g e
Carton Code	YQ01LE01
Packaging Description	Packed into printed film and then into printed, coded cartons and then into cardboard shelf ready outer cases, 5 units per case

## 2. Labelling

Legal Descriptor	Deliciously baked oats and golden syrup with almonds, hazelnuts and cashews.
On Pack Ingredient Declaration Including Allergens	<p>Ingredients:  Wholegrain <b>OAT</b> flakes (62%), golden syrup (partially inverted sugar syrup) (17%), toasted wholegrain RYE flakes, vegetable oil (rapeseed and sunflower oil in varying proportions), whole &amp; sliced <b>ALMONDS</b> (3.5%), roasted chopped <b>HAZELNUTS</b> (2%), <b>CASHEW PIECES</b> (2%), desiccated coconut, natural flavouring.</p> <p>Allergy Advice: For allergens, including cereals containing gluten, see ingredients in Bold.</p> <p>May also contain other cereals containing gluten, other nuts.</p>
The percentages/g per 100g statements within/following the ingredients list are calculated based on UK/EU QUID regulations - this uses quantities used in manufacture and can total more than 100% due to water loss. For your reference there is 70% total wholegrain in this finished product. For further ingredient breakdown, contact the Central Technical Dept.	
Storage Information	Once opened, roll the inner bag down tightly, then store in a cool, dry place.
Shelf Life (days)	320
Best Before Date Format	dd mm yyyy
Traceability Coding	Line, Julian, Time e.g. (LA 5212 10:15)

The allergens listed above are based on the 14 EU allergens. If products are being sold internationally, please contact us for further allergen information.

## 3. Nutritional Information

Nutrient	Per 100g	Per Portion	% RI* Per Portion
Energy kJ	1854 kJ	834 kJ	10 %
Energy kcal	442 kcal	199 kcal	
Fat	15.6 g	7.0 g	10 %
Saturates	1.9 g	0.9 g	4 %
Carbohydrate	61.9 g	27.9 g	11 %
Sugar	13.1 g	5.9 g	7 %

Fibre	6.2 g	2.8 g	
Protein	10.3 g	4.6 g	9 %
Salt	0.03 g	0.01 g	<1 %
*Reference Intake of an average adult (8400kJ / 2000kcal)			
Serving size	45 g		
Servings per pack	Approximately 11 portions per pack		

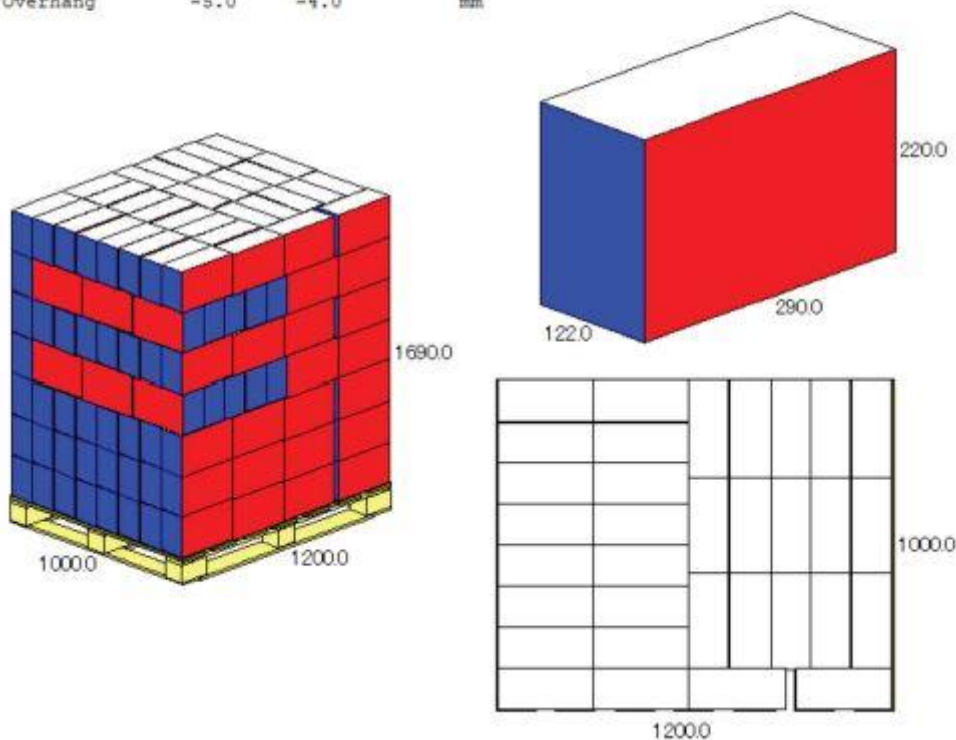
#### 4. Pallet Plan

The weights in the below pallet plan are generic weights for this particular pallet plan and should only be used for guidance only.

Product Name AUS DORSET  
Product Code 30766  
Analysis Date 13/03/2020  
Load Ref. 1 T  
Cube Used 96.5 %  
Area Used 97.3 %  
Pallet type UKSTD

Pallet plan: RY0516

				33		Case / Layer
				7		Layer / Load
				231		Case / Load
	Length	Width	Height	Net	Gross	Volume
Case (OD)	290.0	122.0	220.0 mm	2.050	2.330 Kg	7783 cm <sup>3</sup>
Load	1200.0	1000.0	1690.0 mm	538.230	563.230 Kg	2.03 m <sup>3</sup>
Overhang	-5.0	-4.0	mm			



#### 5. GS1 Barcodes

Consumer Unit	Traded Unit
Barcode Number 5018357804764	Barcode Number 15018357804778

#### 6. Suitability

This product does not contain genetically modified organisms (GMO)
Suitable for vegetarians

#### 7. Logos

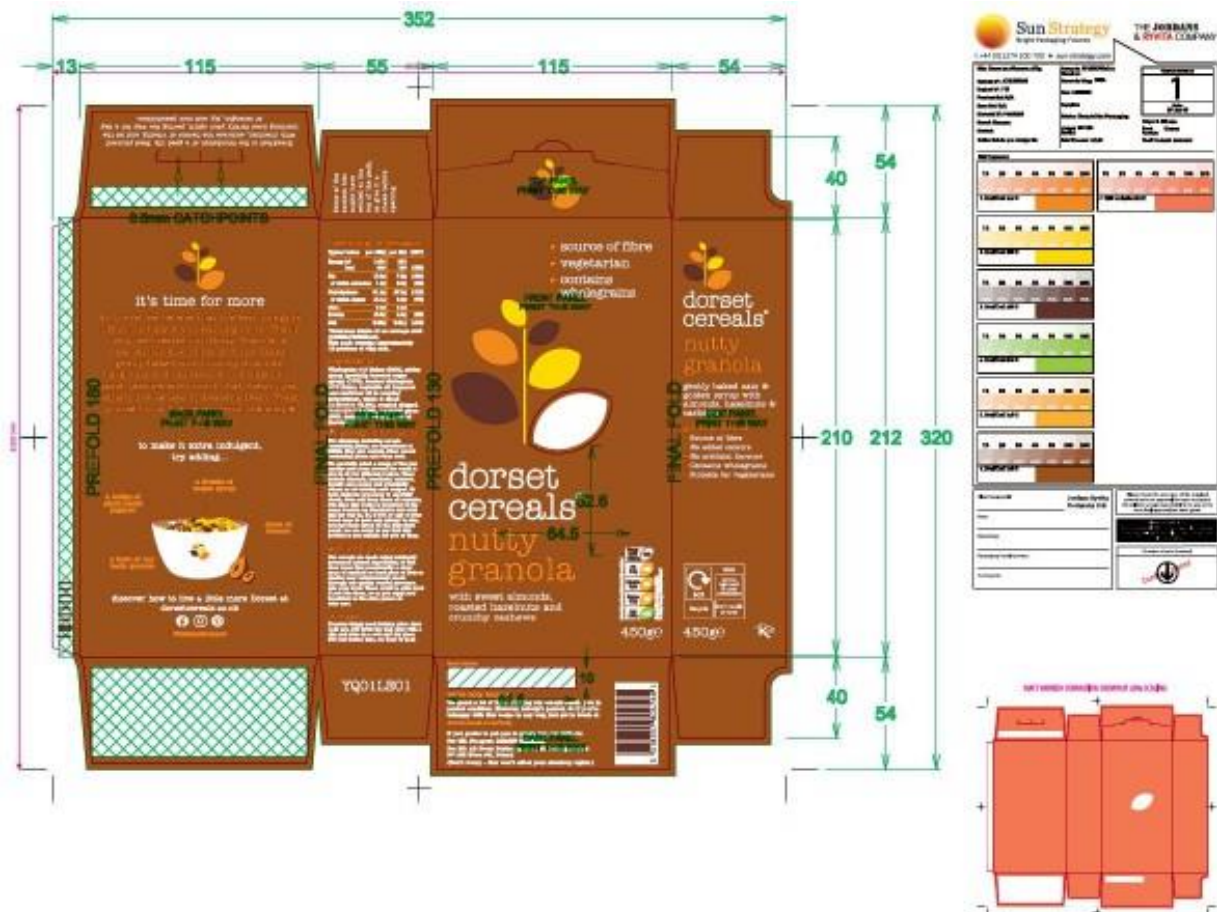
OPRL (On-Pack Recycling Label)
Kosher (KLBD)
Facebook
Pinterest
Instagram

## 8. Process Information

Granola is baked at either MGR or 3rd party. At MGR, dry and wet ingredients are mixed according to formulation, then fed onto an oven belt and baked. Baked granola is filled into FIBCs, wrapped in stretch wrap and sent down to Poole.

At Poole, FIBCs are received from MGR or 3rd party and tipped onto the packing lines. Granola is put over the weigher heads and is gravity fed to a form and seal machine. The packs are passed through an x-ray. Sensitivities are 5mm glass, 2mm stainless steel, 2mm non-ferrous, 2mm ferrous. The finished product is packed in to the carton and outer case, which are then stacked on a pallet. When the pallet is full it is covered with a plastic top sheet, wrapped with shrink wrap, labelled and scanned. The wrapped pallets are then stored at room temperature.


## 9. Packaging Image



## 10. Revision History

SKU Code Version	Reason
3	Spec reviewed – No changes

## 11. Approvals

Department	Approved	Approved by	Date
Compliance	Yes	Eloise Boyd 	15/04/2024