

Glebe farm Foods Product Specification Sheet



Product Name	Product Code
Pureoaty Creamy and enriched oat drink 6 x 1 Litre	40085

INGREDIENT DECLARATION	Water, Gluten Free Oats (11%), Sunflower Oil, Salt, Vitamins Folic Acid B12, B2 D.
------------------------	--

Ingredient	Country of origin
Water	UK
Gluten free Oats	UK
Sunflower Oil	Austria, Belgium, Bulgaria, Croatia, Cyprus, Czech Republic, Denmark, Estonia, Finland, France, Germany, Greece, Hungary, Italy, Ireland, Latvia, Lithuania, Luxembourg, Malta, Netherlands, Poland, Portugal, Romania, Slovenia, Slovakia, Spain, Sweden, UK+ Argentina
Salt	Netherlands, United Kingdom, China

Finished Product Standards	
Parameter	Specification
Description Of Product	Pureoaty creamy and enriched
Appearance	Opaque, off-white / creamy in colour
Flavour	Mildly sweet, top noted of cooked oats with a slightly acidic back
Odour / Aroma	Typically, odour free, slight oaty note with no adverse aroma
Texture	Smooth creamy liquid

Analytical standards		
Test	Target	Frequency
PH	6.5-7.2	Every Batch
Brix	11.0 – 14.0	Every Batch

Test	Target	Frequency
Total Viable Count	<100 cfu/g	Every Batch
E. coli	< 1 cfu/g	
Yeast & Moulds	< 2cfu/g	
Salmonella spp	Not Detected in 25g	
Listeria Monocytogenes	Not Detected in 25g	

DOCUMENT REF:	PRODUCT CODE:	ISSUE NO:	ISSUED BY:	ISSUE DATE:	PAGE NUMBER
SPC96	40085	6	Kerry Richards	15.01.2024	Page 1 of 8

Glebe farm Foods Product Specification Sheet



GMO Information

No product produced at Glebe Farm Foods contains any genetically modified ingredients.

Nutritional Values

Nutrient	Value	Units	Method
Energy	244	Kj	External Lab
Energy	58	Kcal	
Fat	2.6	g / 100g	
Of which saturates	0.34	g / 100g	
Carbohydrate	7.6	g / 100g	
Of which sugars	3.8	g / 100g	
Fibre	<0.5	g / 100g	
Protein	1.0	g / 100g	
Salt	0.1	g / 100g	
Folic Acid	30	µg	
Vitamin B12	0.38 (15%)	µg	
Vitamin B2	0.21 (15%)	mg	
Vitamin D	0.75 (15%)	µg	
Calcium	120 (15%)	mg	

Suitability Information

Ovo-Lacto Vegetarians	Yes
Vegans	Yes
Diabetics	NO
Coeliacs	Yes
Lactose Intolerant	Yes
Nut Allergies	Yes
Kosher	Yes
Halal	Yes (Not certified)

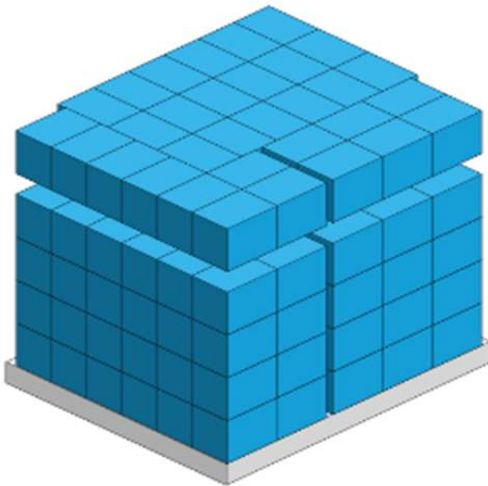
Glebe farm Foods Product Specification Sheet



Allergen Information									
	The allergen is present in the material	Production Site				Packing Site			
		The allergen is present on PRODUCTION SITE	The allergen is used in the PRODUCTION SITE but in a segregated area, using segregated equipment	The allergen is used on the same line at the PRODUCTION SITE	Is there a risk of cross contamination of the raw material at the PRODUCTION SITE	The allergen is present on PACKING SITE	The allergen is used in the PACKING SITE but in a segregated area, using segregated equipment	he allergen is used on the same line at the PACKING SITE	Is there a risk of cross contamination of the raw material at the PACKING SITE
Peanut or its derivatives	No	No	No	No	No	No	No	No	No
Tree nuts	No	No	No	No	No	No	No	No	No
Sesame or its derivatives	No	No	No	No	No	No	No	No	No
Milk or its derivatives	No	No	No	No	No	No	No	No	No
Eggs or its derivatives	No	No	No	No	No	No	No	No	No
Fish or its derivatives	No	No	No	No	No	No	No	No	No
Shellfish or its derivatives	No	No	No	No	No	No	No	No	No
Molluscs or their derivatives	No	No	No	No	No	No	No	No	No
Soy or its derivatives	No	No	No	No	No	No	No	No	No
Sulphites	No	No	No	No	No	No	No	No	No
Cereals containing Gluten	No	No	No	No	No	No	No	Yes <5ppm	No
Celery or its derivatives	No	No	No	No	No	No	No	No	No
Mustard or its derivatives	No	No	No	No	No	No	No	No	No
Lupins or their derivatives	No	No	No	No	No	No	No	No	No

Glebe farm Foods Product Specification Sheet



Primary Packaging Information		Recyclability %
Weight/Volume	1 Litre (e) (1000ml)	NA
EAN Barcode	05060084572607	NA
Primary Packaging Material	Tetra Pak paper aluminium	97%
Primary Pack Dimensions	70x 71 x 210mm	NA
Pack Weight Gross	1 Litre (1037g)	NA
Packaging weight carton (Including Lightwing)	37g	97%
Secondary Packaging Information		Recyclability %
Outer case label weight/Dimensions	0.002g/124mm/75mm	100%
Outer case packaging weight	104g	100%
Outer case Barcode	0506008472591	NA
Outer Packaging dimensions	218 x 151 x 204mm	NA
Secondary Packaging Material	Corrugated SRP	100%
Total weight 6x1litre	6326g	97%
Tertiary Packaging Information		Recyclability %
Wooden pallet	17kg	100%
Shrink wrap	4,2kg	TBC
Pallet packaging Information		
Pallet weight including pallet	1029.17Kg	
Cases per layer	32	
Layers per pallet	5	
Outer Cases per pallet	160	
Single Units (l) per pallet	960	
Pallet Configuration		
		

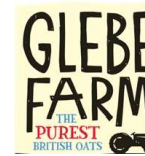
Glebe farm Foods Product Specification Sheet



Label coding	
EAN/Pack barcode	Outer packaging barcode

Storage Conditions				
Shelf life from manufacture	Storage conditions	Delivery temperature / conditions:	Once opened shelf life	Storage conditions once opened
12 Months	Store in cool, dry conditions, away from strong odours, heat or light	Ambient / Dry	Consume within 5 days	Refrigerated

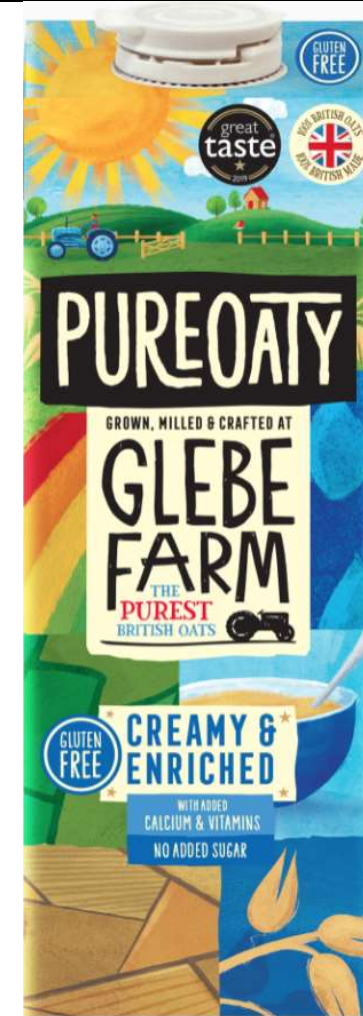
Glebe farm Foods Product Specification Sheet



Finished Product Artwork

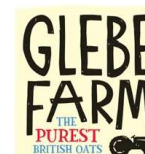


Carton

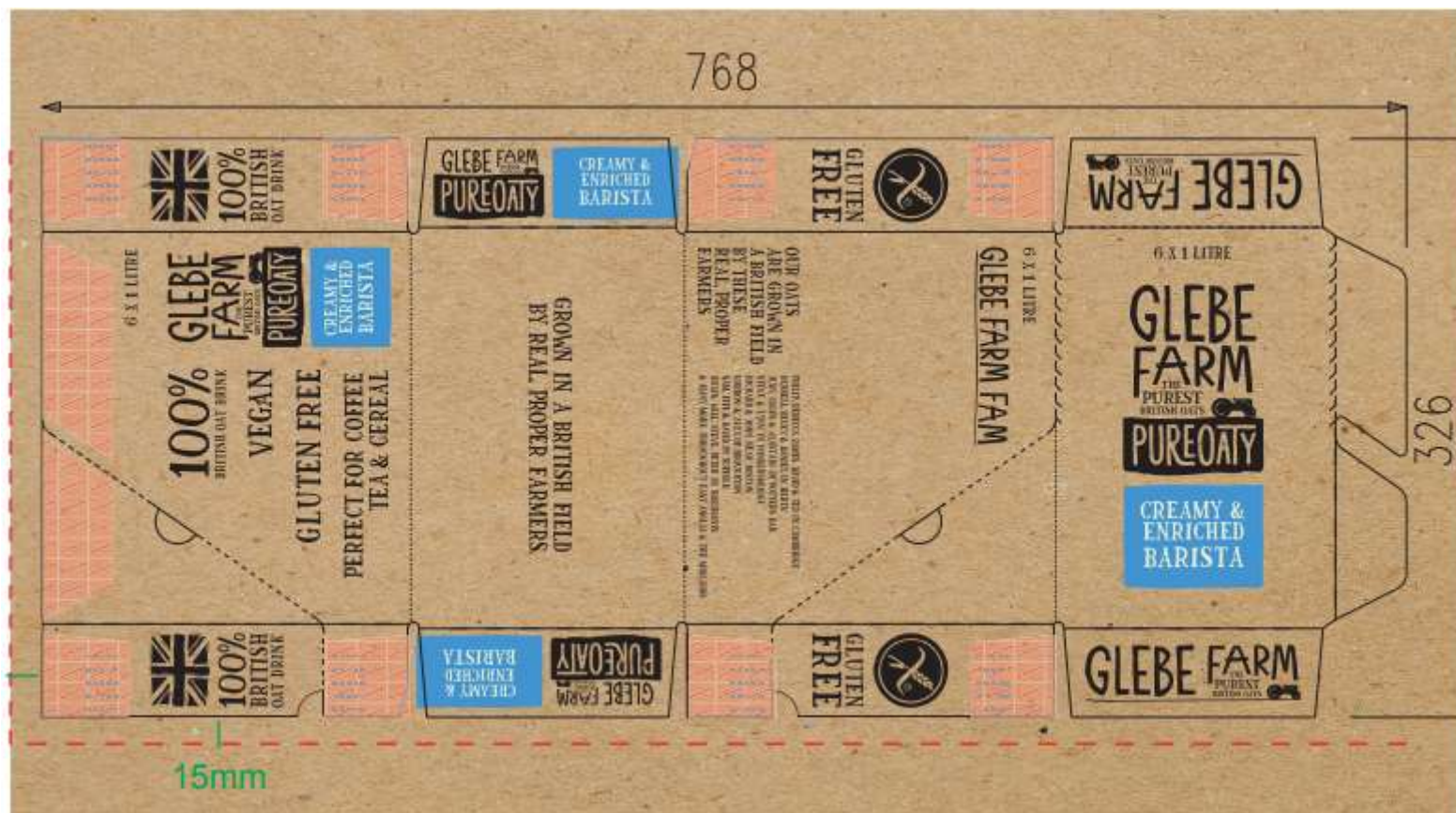


DOCUMENT REF:	PRODUCT CODE:	ISSUE NO:	ISSUED BY:	ISSUE DATE:	PAGE NUMBER:
SPC96	40085	6	Kerry Richards	15.01.2024	Page 6 of 8

Glebe farm Foods Product Specification Sheet



Outer Case



DOCUMENT REF:	PRODUCT CODE:	ISSUE NO:	ISSUED BY:	ISSUE DATE:	PAGE NUMBER:
SPC96	40085	6	Kerry Richards	15.01.2024	Page 7 of 8

Glebe farm Foods Product Specification Sheet



WARRANTY:

This product is prepared, processed, packaged and handled under strict hygiene conditions consistent with the principles of good manufacturing practice and complies with all relevant UK and EU legislation at the time of supply.

This specification and its contents are confidential and should not be disclosed to a third party without the written approval Glebe Farm Foods Ltd.


It is the responsibility of the user to ensure this information is appropriate and complete with respect to the specific use intended for the product. Local national regulations should be consulted for the intended specific application and declaration as legislation may vary from country to country.

The information stated is provided in good faith. It is based upon the product formulation, the data provided by our raw material suppliers and the factory of manufacture at the date of issue of this specification.

This product conforms to EU MRL for pesticides.

POSITION	NAME	EMAIL ADDRESS:
Technical Systems Manager	Kerry Richards	Kerry.richards@glebefarmfoods.co.uk

SPECIFICATION AUTHORISATION:

Authorised By:	Serena Woolland
Position:	Head of Technical
Date:	15.01.2024
Signed:	

CUSTOMER AGREEMENT:

Authorised By:	
Position:	
Date:	
Signed:	

Please note if this specification is not returned signed, within 28 days of the date of receipt, Glebe Farm Foods Ltd will assume acceptance of this document.

DOCUMENT REF:	PRODUCT CODE:	ISSUE NO:	ISSUED BY:	ISSUE DATE:	PAGE NUMBER:
SPC96	40085	6	Kerry Richards	15.01.2024	Page 8 of 8